

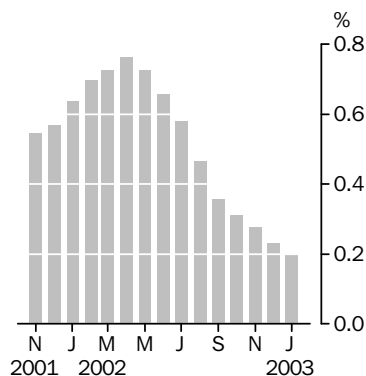


# RETAIL TRADE

AUSTRALIA

EMBARGO: 11.30AM (CANBERRA TIME) THURS 6 MAR 2003

## Monthly turnover

Trend estimates  
% change

## KEY FIGURES

	Dec 02 to	
	Jan 03	Jan 03
	\$m	% change
<b>Turnover at current prices</b>		
Trend estimates	14 521.8	0.2
Seasonally adjusted estimates	14 478.7	0.2

## KEY POINTS

### TREND ESTIMATES

- The trend estimate of turnover for the Australian Retail and Hospitality/Services series increased by 0.2% in January 2003 compared with December 2002. This follows increases of 0.2% in December and 0.3% in November 2002.
- The trend estimate increased in all states except for the Northern Territory. The largest increases were in Western Australia, Tasmania and the Australian Capital Territory.
- Over the three months to January 2003 the trend estimate rose by \$102m. The Food retailing (+\$41m), Department stores (+\$30m) and Other retailing (+\$27m) industries showed the largest increases.

### SEASONALLY ADJUSTED

- The seasonally adjusted estimate of turnover for the Australian Retail and Hospitality/Services series increased by 0.2% in January 2003 compared with December 2002. This follows a decrease of 0.9% in December and an increase of 1.6% in November 2002.
- The estimate of total turnover for January 2003 was 5.4% higher than January 2002.
- January 2003 grew by 0.2% while January 2002 grew by 1.2%, despite both months having similar falls in original terms (-21.7% and -22.0%, respectively). The difference in the seasonally adjusted estimates is due to the trading day influences in each month, i.e. January 2003 had five Fridays while January 2002 had four Fridays. Fridays, on average, have higher activity than other days.

### ORIGINAL ESTIMATES

- In original terms, Australian turnover decreased by 21.7% in January 2003 compared with December 2002. Chains and other large retailers (which are completely enumerated) decreased by 24.9%, while 'smaller' retailers (the sampled units) decreased by 17.1%.
- Australian turnover increased by 6.4% in January 2003 compared with January 2002. Chains and other large retailers increased by 7.2%, while 'smaller' retailers increased by 5.4%.

- For further information about these and related statistics, contact the National Information and Referral Service on 1300 135 070 or Graham Phillips on Canberra 02 6252 5625.

# NOTES

## FORTHCOMING ISSUES

<i>ISSUE</i>	<i>RELEASE DATE</i>
February 2003	2 April 2003
March 2003	6 May 2003
April 2003	30 May 2003
May 2003	2 July 2003
June 2003	31 July 2003
July 2003	2 September 2003



## REVISIONS

The July 2002 issue of this publication presented the first release of estimates from the Retail Business Survey compiled using new statistical infrastructure. Data prior to July 2002 were revised to smooth in the impact of moving to the new statistical infrastructure. Although this was generally successful, some more detailed series displayed a shift in the underlying level between June and July 2002.

As a result of a targeted analysis, the October 2002 issue of this publication included trend breaks between June and July 2002 in some series within the Other retailing and Hospitality and services industries. This removed the impact of a shift in the underlying level from the trend series but it did not remove it from the original series.

The trend break technique has now been applied to all series and statistically significant residual shifts between June and July 2002 were identified in the Clothing retailing, Pharmaceutical, cosmetic and toiletry retailing, Other retailing n.e.c., Cafes and restaurants and Selected services industries.

The residual shift in level has been removed from the original series for the above industries and smoothed back to April 1982. For the affected series, the movement between June and July 2002 has changed but there has been no change to the original series for more recent periods. These revisions had an impact at the total state level, with New South Wales and Victoria the most affected. The July 2002 movement for Australian total turnover, in original terms, has been revised to 3.6%, compared to 3.2% as published in the December 2002 issue. Seasonally adjusted and trend series are also affected by these revisions both before and after June 2002. The trend breaks included in the October 2002 issue have been removed.

Despite these final revisions, it is possible that a small number of detailed series will continue to display greater than normal volatility between June and July 2002 and should continue to be treated with more caution than normal. For these series it has not been possible to separate the residual impact of the new statistical infrastructure from the normal volatility of the series.

Revisions have also been made to the Hospitality and Services industry for Queensland and Western Australia for October, November and December 2002.

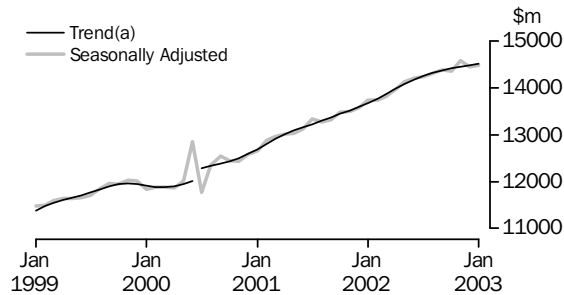
Susan Linacre  
Acting Australian Statistician

# INDUSTRY TRENDS

## MONTHLY SEASONALLY ADJUSTED AND TREND ESTIMATES

### TOTAL RETAIL

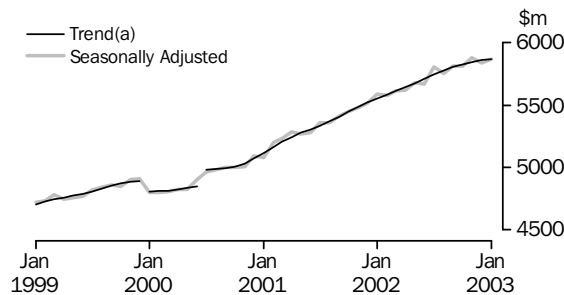
There has been weak growth in the trend estimate in each of the last four months. The Household good retailing, Recreational good retailing and Hospitality and Services industries have been flat or in decline in each of these months. Department stores had moderate trend growth in January 2003 after four months of strong growth.



(a) Break in trend series from July 2000

### FOOD RETAILING

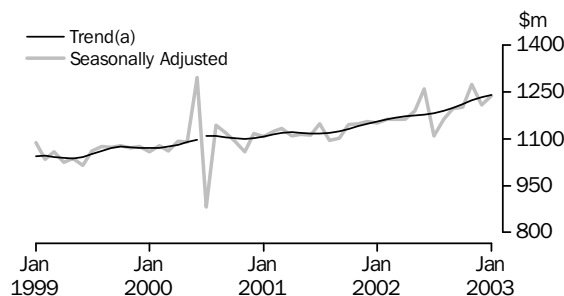
After twelve months of moderate trend growth there has been weak trend growth in each of the last three months. All states except Western Australia and Tasmania have had weak or no growth in each of the last two months.



(a) Break in trend series from January and July 2000

### DEPARTMENT STORES

After four months of strong trend growth there was moderate growth in January 2003. All states, except New South Wales and the Australian Capital Territory, had strong growth in at least the last four months.



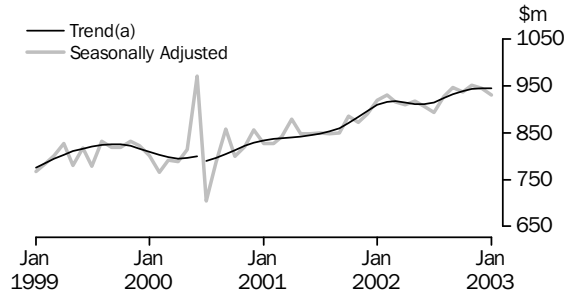
(a) Break in trend series from July 2000

## INDUSTRY TRENDS *continued*

### MONTHLY SEASONALLY ADJUSTED AND TREND ESTIMATES

**CLOTHING AND SOFT  
GOOD RETAILING**

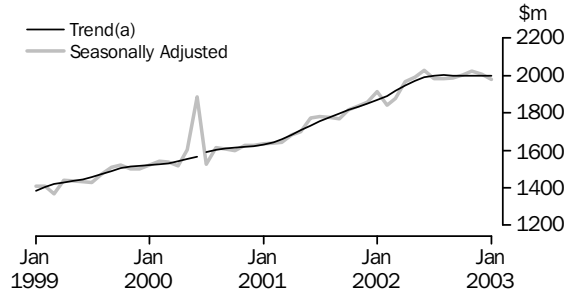
The rate of trend growth has been slowing since September 2002 with weak growth in the last two months. In January 2003, Queensland and South Australia had strong growth, New South Wales and Western Australia had weak growth, while all other states had no growth or were in decline.



(a) Break in trend series from July 2000

**HOUSEHOLD GOOD  
RETAILING**

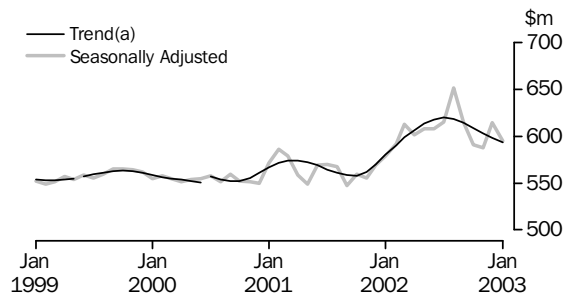
Trend growth has been flat for the last four months. Since June 2002, the rate of growth for New South Wales has decreased and has been in decline in the last two months. Victoria, Queensland, Tasmania and the Northern Territory have been flat or in decline for at least the last four months, while Western Australia and the Australian Capital Territory have had strong trend growth in these months.



(a) Break in trend series from July 2000

**RECREATIONAL GOOD  
RETAILING**

The rate of trend growth has been in decline for the last six months. The trend for all states and territories except South Australia, Western Australia and the Australian Capital Territory has been in decline or flat for at least the last five months.



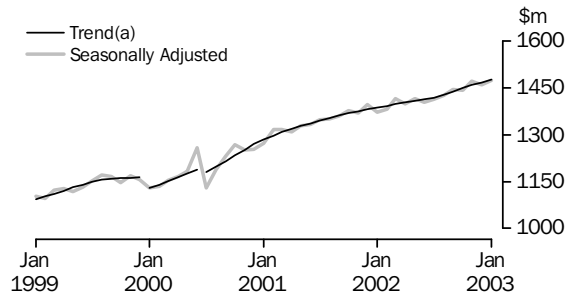
(a) Break in trend series from June 1999 and July 2000

## INDUSTRY TRENDS *continued*

### MONTHLY SEASONALLY ADJUSTED AND TREND ESTIMATES

#### OTHER RETAILING

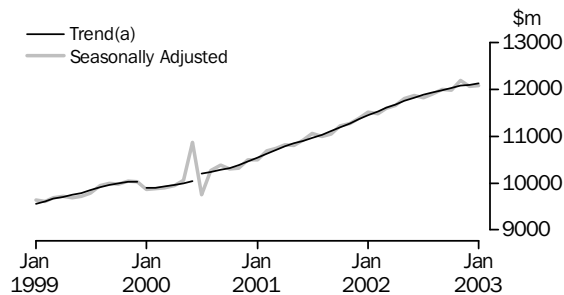
The trend growth has been moderate over the last eight months. While Queensland has had strong growth since August 2002, South Australia and Western Australia have been in decline for the last five months. The Australian Capital Territory has had large declines in the last two months.



(a) Break in trend series from January 2000 and July 2000

#### TOTAL RETAIL (EXCLUDING HOSPITALITY AND SERVICES)

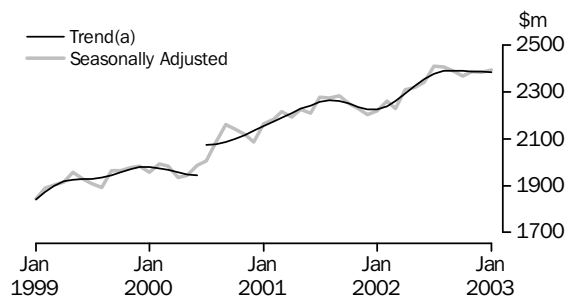
The rate of trend growth for Total retail (excluding Hospitality and services) and Total industries (including Hospitality and services) has been similar for at least the last seven months.



(a) Break in trend series from January 2000 and July 2000

#### HOSPITALITY AND SERVICES

The trend growth has been flat or in decline for the last four months. For January 2003, trend growth was in decline in Queensland, South Australia, Western Australia and Tasmania.



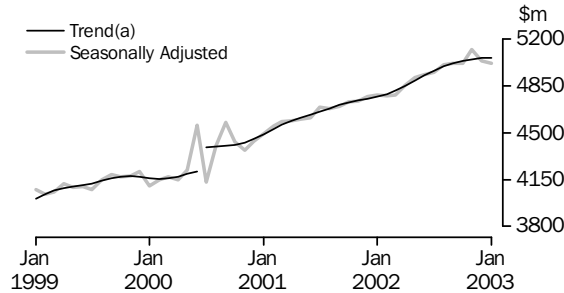
(a) Break in trend series from July 2000

## STATE TRENDS

### MONTHLY SEASONALLY ADJUSTED AND TREND ESTIMATES

#### NEW SOUTH WALES

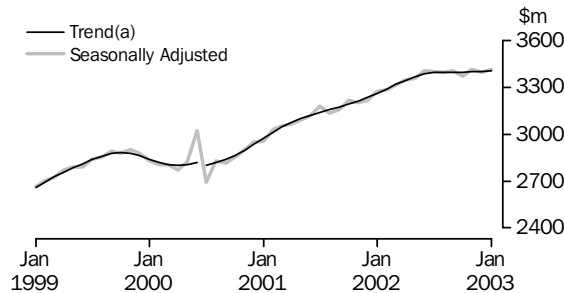
The rate of trend growth has been decreasing since July 2002 with the rate of growth in the Food retailing, Household good retailing and Other retailing industries decreasing over this period. The Recreational good retailing industry has been in decline for each of the last six months.



(a) Break in trend series from July 2000

#### VICTORIA

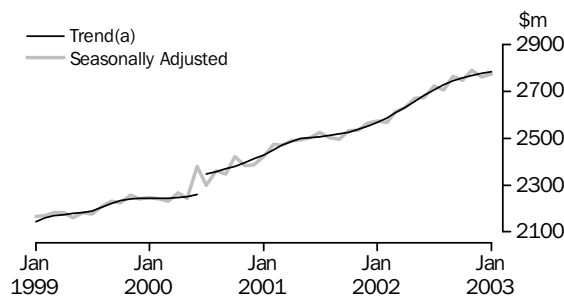
Trend growth has been flat or weak in each of the last seven months. Trend growth for Clothing retailing and Recreational good retailing has been in decline for at least the last four months, while Department stores has had strong growth in these four months.



(a) Break in trend series from July 2000

#### QUEENSLAND

There has been moderate to weak trend growth in each of the last six months. Department stores, Clothing and soft good retailing and Other retailing industries recorded strong trend growth in each of these months. Food retailing had weak growth in this period. Household good and Recreational good retailing have been in decline for at least the last five months.



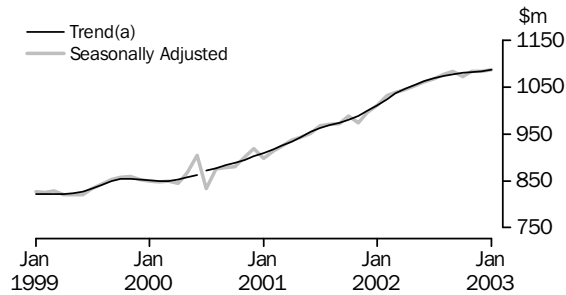
(a) Break in trend series from July 2000

## STATE TRENDS *continued*

### MONTHLY SEASONALLY ADJUSTED AND TREND ESTIMATES

#### SOUTH AUSTRALIA

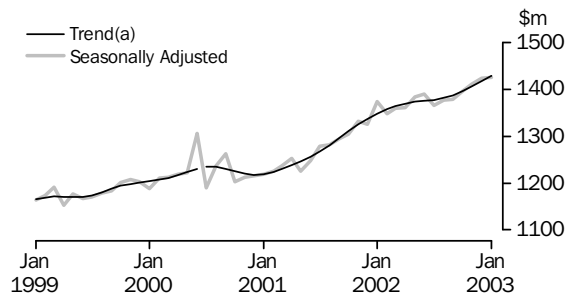
There has been weak trend growth in each of the last five months. Strong growth in Department stores and Clothing and soft good retailing in each of the last four months has been offset by declines in the Other retailing and Hospitality and services industries.



(a) Break in trend series from July 2000

#### WESTERN AUSTRALIA

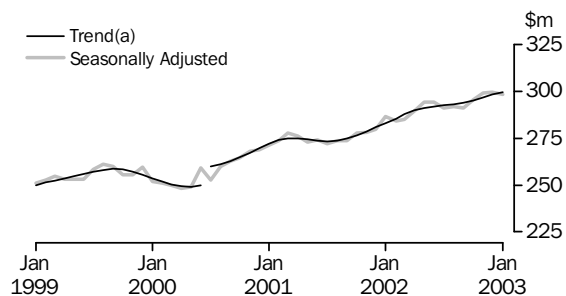
There has been medium to strong trend growth in each of the last five months. Department stores and Household good retailing had strong growth in at least the last four months, while Food retailing had medium growth in January 2003 after five months of strong growth. Other retailing has been in decline for eight months.



(a) Break in trend series from July 2000

#### TASMANIA

After four months of weak trend growth there has been moderate growth in each of the last four months. After eight months of strong to medium trend growth, the Hospitality and services industry has been in decline for the last two months. The Household good retailing and Recreational good retailing industries have been in decline or flat in each of the last five months.



(a) Break in trend series from July 2000

## RETAIL TURNOVER, By Industry Group(a)

Month	Food retailing	Department stores	Clothing and soft good retailing	Household good retailing	Recreational good retailing	Other retailing	Hospitality and services	Total
ORIGINAL (\$ million)								
<b>2001</b>								
November	5 583.9	1 320.9	915.0	1 947.7	588.7	1 483.2	2 288.5	14 127.8
December	6 246.6	2 235.0	1 284.7	2 374.9	810.1	1 990.3	2 514.6	17 456.3
<b>2002</b>								
January	5 737.4	1 011.3	895.5	1 895.3	576.2	1 276.5	2 226.1	13 618.3
February	5 150.4	824.6	730.0	1 643.8	530.7	1 202.6	2 066.0	12 148.2
March	5 761.1	1 021.8	831.6	1 777.3	589.2	1 307.4	2 265.6	13 553.9
April	5 408.1	1 053.6	890.9	1 816.0	560.8	1 311.7	2 231.8	13 273.0
May	5 693.4	1 164.1	963.1	1 937.4	579.8	1 410.2	2 283.0	14 031.0
June	5 356.5	1 120.7	869.7	1 964.6	546.8	1 285.7	2 210.5	13 354.3
July	5 636.6	1 053.4	868.3	1 947.2	591.4	1 352.1	2 381.3	13 830.3
August	5 793.5	1 042.8	862.7	1 965.3	641.3	1 399.0	2 440.4	14 144.9
September	5 557.1	1 038.1	887.0	1 915.7	585.9	1 389.6	2 353.0	13 726.4
October	5 963.7	1 187.7	952.7	2 047.6	579.8	1 474.2	r2 390.8	r14 596.4
November	5 965.8	1 470.3	1 003.9	2 128.8	616.9	1 567.7	r2 438.4	r15 191.8
December	6 580.9	2 302.3	1 357.9	2 574.0	883.0	2 103.9	r2 711.4	r18 513.5
<b>2003</b>								
January	6 094.9	1 079.3	910.0	1 977.4	593.5	1 379.5	2 459.2	14 493.9
SEASONALLY ADJUSTED (\$ million)								
<b>2001</b>								
November	5 481.9	1 149.2	871.9	1 836.8	555.4	1 370.4	2 228.6	13 494.2
December	5 513.9	1 156.0	890.1	1 856.5	568.8	1 395.5	2 202.4	13 583.3
<b>2002</b>								
January	5 590.9	1 149.9	918.6	1 911.9	579.1	1 372.1	2 219.7	13 742.3
February	5 574.6	1 162.6	929.9	1 839.5	592.0	1 381.3	2 261.0	13 741.0
March	5 614.5	1 163.7	916.9	1 877.7	612.6	1 417.0	2 227.3	13 829.7
April	5 621.4	1 164.0	910.3	1 965.6	601.4	1 399.7	2 311.7	13 974.2
May	5 681.4	1 189.0	918.1	1 990.6	608.3	1 417.1	2 318.4	14 122.8
June	5 666.3	1 260.1	906.0	2 027.7	608.0	1 403.1	2 341.8	14 213.0
July	5 808.2	1 109.8	893.9	1 984.5	615.6	1 414.9	2 409.1	14 236.0
August	5 755.4	1 162.3	927.5	1 983.3	651.6	1 425.1	2 405.9	14 311.1
September	5 813.1	1 196.2	946.4	1 987.3	615.1	1 446.3	2 392.6	14 397.0
October	5 812.1	1 201.8	937.0	2 004.1	590.7	1 442.4	2 368.8	14 356.7
November	5 882.9	1 274.2	951.6	2 022.3	587.5	1 473.2	2 389.2	14 581.0
December	5 836.4	1 208.8	945.6	2 004.8	614.5	1 459.6	2 383.9	14 453.6
<b>2003</b>								
January	5 866.4	1 237.5	931.4	1 977.9	595.3	1 475.2	2 394.9	14 478.7
TREND ESTIMATES (\$ million)								
<b>2001</b>								
November	5 486.6	1 140.7	883.7	1 833.4	561.5	1 375.5	2 236.8	13 517.7
December	5 523.6	1 149.1	897.4	1 849.2	569.7	1 381.1	2 226.7	13 594.6
<b>2002</b>								
January	5 555.6	1 156.4	909.1	1 867.5	580.3	1 386.9	2 225.8	13 681.0
February	5 584.3	1 162.8	916.2	1 890.4	590.2	1 392.8	2 237.6	13 776.2
March	5 611.5	1 167.5	917.6	1 917.2	598.7	1 398.1	2 260.8	13 876.0
April	5 641.0	1 172.1	915.1	1 945.5	606.3	1 403.3	2 292.4	13 981.5
May	5 673.0	1 174.9	912.0	1 971.0	613.3	1 407.9	2 326.1	14 082.9
June	5 708.4	1 177.3	911.1	1 989.5	617.9	1 413.1	2 356.0	14 175.2
July	5 745.3	1 181.5	915.3	1 999.9	619.8	1 419.7	2 377.9	14 257.6
August	5 778.9	1 188.7	923.4	2 001.9	618.3	1 428.1	2 389.5	14 324.0
September	5 805.6	1 199.0	932.1	1 999.6	614.2	1 438.6	2 391.8	14 375.1
October	5 826.7	1 211.1	939.0	1 999.5	608.5	1 449.3	2 390.2	14 419.7
November	5 844.4	1 223.0	943.3	2 000.4	602.9	1 459.1	2 388.5	14 459.6
December	5 860.4	1 233.1	945.4	2 000.0	598.2	1 468.2	2 387.4	14 493.3
<b>2003</b>								
January	5 868.1	1 241.2	945.9	2 000.6	593.3	1 475.8	2 383.8	14 521.8

r revised

(a) See paragraph 5 of the Explanatory Notes.



## RETAIL TURNOVER PERCENTAGE CHANGE, By Industry Group(a)

Month	Food retailing	Department stores	Clothing and soft good retailing	Household good retailing	Recreational good retailing	Other retailing	Hospitality and services	Total
ORIGINAL (% change from preceding month)								
<b>2001</b>								
November	1.3	19.0	2.7	5.0	8.0	6.2	0.8	4.0
December	11.9	69.2	40.4	21.9	37.6	34.2	9.9	23.6
<b>2002</b>								
January	-8.2	-54.8	-30.3	-20.2	-28.9	-35.9	-11.5	-22.0
February	-10.2	-18.5	-18.5	-13.3	-7.9	-5.8	-7.2	-10.8
March	11.9	23.9	13.9	8.1	11.0	8.7	9.7	11.6
April	-6.1	3.1	7.1	2.2	-4.8	0.3	-1.5	-2.1
May	5.3	10.5	8.1	6.7	3.4	7.5	2.3	5.7
June	-5.9	-3.7	-9.7	1.4	-5.7	-8.8	-3.2	-4.8
July	5.2	-6.0	-0.2	-0.9	8.2	5.2	7.7	3.6
August	2.8	-1.0	-0.6	0.9	8.4	3.5	2.5	2.3
September	-4.1	-0.4	2.8	-2.5	-8.6	-0.7	-3.6	-3.0
October	7.3	14.4	7.4	6.9	-1.0	6.1	1.6	6.3
November	0.0	23.8	5.4	4.0	6.4	6.3	2.0	4.1
December	10.3	56.6	35.3	20.9	43.1	34.2	11.2	21.9
<b>2003</b>								
January	-7.4	-53.1	-33.0	-23.2	-32.8	-34.4	-9.3	-21.7
SEASONALLY ADJUSTED (% change from preceding month)								
<b>2001</b>								
November	0.6	0.3	-1.4	1.0	-0.7	-0.4	-1.1	0.1
December	0.6	0.6	2.1	1.1	2.4	1.8	-1.2	0.7
<b>2002</b>								
January	1.4	-0.5	3.2	3.0	1.8	-1.7	0.8	1.2
February	-0.3	1.1	1.2	-3.8	2.2	0.7	1.9	0.0
March	0.7	0.1	-1.4	2.1	3.5	2.6	-1.5	0.6
April	0.1	0.0	-0.7	4.7	-1.8	-1.2	3.8	1.0
May	1.1	2.1	0.9	1.3	1.1	1.2	0.3	1.1
June	-0.3	6.0	-1.3	1.9	-0.1	-1.0	1.0	0.6
July	2.5	-11.9	-1.3	-2.1	1.3	0.8	2.9	0.2
August	-0.9	4.7	3.8	-0.1	5.9	0.7	-0.1	0.5
September	1.0	2.9	2.0	0.2	-5.6	1.5	-0.6	0.6
October	0.0	0.5	-1.0	0.8	-4.0	-0.3	-1.0	-0.3
November	1.2	6.0	1.6	0.9	-0.5	2.1	0.9	1.6
December	-0.8	-5.1	-0.6	-0.9	4.6	-0.9	-0.2	-0.9
<b>2003</b>								
January	0.5	2.4	-1.5	-1.3	-3.1	1.1	0.5	0.2
TREND ESTIMATES (% change from preceding month)								
<b>2001</b>								
November	0.7	0.8	1.5	0.9	0.7	0.4	-0.6	0.5
December	0.7	0.7	1.6	0.9	1.5	0.4	-0.5	0.6
<b>2002</b>								
January	0.6	0.6	1.3	1.0	1.9	0.4	0.0	0.6
February	0.5	0.5	0.8	1.2	1.7	0.4	0.5	0.7
March	0.5	0.4	0.1	1.4	1.4	0.4	1.0	0.7
April	0.5	0.4	-0.3	1.5	1.3	0.4	1.4	0.8
May	0.6	0.2	-0.3	1.3	1.2	0.3	1.5	0.7
June	0.6	0.2	-0.1	0.9	0.8	0.4	1.3	0.7
July	0.6	0.4	0.5	0.5	0.3	0.5	0.9	0.6
August	0.6	0.6	0.9	0.1	-0.2	0.6	0.5	0.5
September	0.5	0.9	0.9	-0.1	-0.7	0.7	0.1	0.4
October	0.4	1.0	0.7	0.0	-0.9	0.7	-0.1	0.3
November	0.3	1.0	0.5	0.0	-0.9	0.7	-0.1	0.3
December	0.3	0.8	0.2	0.0	-0.8	0.6	0.0	0.2
<b>2003</b>								
January	0.1	0.7	0.1	0.0	-0.8	0.5	-0.2	0.2

(a) See paragraph 5 of the Explanatory Notes.

## RETAIL TURNOVER, By Sub-Group(a): Original

Month	FOOD RETAILING					CLOTHING & SOFT GOOD RETAILING				HOUSEHOLD GOOD RETAILING			Total
	Supermarkets & grocery stores	Take-away food retailing	Other food retailing	Department stores	Total	Clothing retailing	Foot-wear, fabric & other soft good retailing	Total	Furniture & floor covering retailing	Domestic hardware & house-ware retailing	Domestic appliance & recorded music retailing		
\$ MILLION													
<b>2002</b>													
January	4 159.0	599.0	979.4	5 737.4	1 011.3	599.2	296.3	895.5	445.4	574.2	875.7	1 895.3	
February	3 755.7	509.9	884.8	5 150.4	824.6	493.2	236.8	730.0	377.3	512.7	753.7	1 643.8	
March	4 212.2	571.6	977.3	5 761.1	1 021.8	583.3	248.3	831.6	403.0	566.8	807.5	1 777.3	
April	3 908.3	574.9	924.9	5 408.1	1 053.6	619.7	271.2	890.9	432.8	545.2	838.0	1 816.0	
May	4 157.1	574.6	961.8	5 693.4	1 164.1	666.2	296.9	963.1	436.2	530.8	970.3	1 937.4	
June	3 895.5	558.5	902.4	5 356.5	1 120.7	601.2	268.5	869.7	450.9	512.9	1 000.8	1 964.6	
July	4 069.5	592.3	974.7	5 636.6	1 053.4	594.8	273.5	868.3	469.4	528.2	949.6	1 947.2	
August	4 241.6	577.6	974.2	5 793.5	1 042.8	600.9	261.8	862.7	457.9	566.6	940.8	1 965.3	
September	4 006.6	573.3	977.2	5 557.1	1 038.1	616.1	270.9	887.0	447.2	590.5	878.0	1 915.7	
October	4 338.3	609.2	1 016.1	5 963.7	1 187.7	667.3	285.4	952.7	486.3	635.8	925.5	2 047.6	
November	4 335.0	595.2	1 035.7	5 965.8	1 470.3	713.6	290.3	1 003.9	496.7	667.6	964.5	2 128.8	
December	4 652.8	642.2	1 285.8	6 580.9	2 302.3	997.0	360.9	1 357.9	502.3	737.4	1 334.2	2 574.0	
<b>2003</b>													
January	4 469.4	629.1	996.4	6 094.9	1 079.3	629.0	281.0	910.0	458.8	600.0	918.6	1 977.4	
% CHANGE FROM PRECEDING MONTH													
<b>2002</b>													
January	-6.1	-0.3	-19.6	-8.2	-54.8	-35.5	-16.7	-30.3	-0.1	-17.7	-28.9	-20.2	
February	-9.7	-14.9	-9.7	-10.2	-18.5	-17.7	-20.1	-18.5	-15.3	-10.7	-13.9	-13.3	
March	12.2	12.1	10.5	11.9	23.9	18.3	4.8	13.9	6.8	10.6	7.1	8.1	
April	-7.2	0.6	-5.4	-6.1	3.1	6.2	9.2	7.1	7.4	-3.8	3.8	2.2	
May	6.4	-0.1	4.0	5.3	10.5	7.5	9.5	8.1	0.8	-2.6	15.8	6.7	
June	-6.3	-2.8	-6.2	-5.9	-3.7	-9.8	-9.6	-9.7	3.4	-3.4	3.1	1.4	
July	4.5	6.0	8.0	5.2	-6.0	-1.1	1.9	-0.2	4.1	3.0	-5.1	-0.9	
August	4.2	-2.5	-0.1	2.8	-1.0	1.0	-4.3	-0.6	-2.5	7.3	-0.9	0.9	
September	-5.5	-0.7	0.3	-4.1	-0.4	2.5	3.5	2.8	-2.3	4.2	-6.7	-2.5	
October	8.3	6.3	4.0	7.3	14.4	8.3	5.4	7.4	8.7	7.7	5.4	6.9	
November	-0.1	-2.3	1.9	0.0	23.8	6.9	1.7	5.4	2.1	5.0	4.2	4.0	
December	7.3	7.9	24.2	10.3	56.6	39.7	24.3	35.3	1.1	10.4	38.3	20.9	
<b>2003</b>													
January	-3.9	-2.0	-22.5	-7.4	-53.1	-36.9	-22.1	-33.0	-8.7	-18.6	-31.2	-23.2	
% CHANGE FROM CORRESPONDING MONTH OF PREVIOUS YEAR													
<b>2002</b>													
January	10.7	5.2	20.5	11.6	5.9	14.5	7.2	12.0	19.5	18.0	15.4	17.1	
February	6.0	1.1	16.5	7.1	3.4	13.7	9.7	12.4	12.9	19.0	7.8	12.2	
March	7.1	0.3	13.7	7.4	2.6	7.9	-1.1	5.1	5.8	19.1	9.5	11.5	
April	4.4	6.5	10.3	5.6	3.8	4.6	14.0	7.3	15.2	17.0	22.4	19.0	
May	7.8	8.4	15.7	9.1	5.9	5.3	16.2	8.5	11.6	12.9	24.6	18.2	
June	4.5	5.6	10.9	5.6	11.7	1.7	10.7	4.3	5.3	9.1	19.4	13.1	
July	7.3	7.9	18.9	9.2	-2.7	6.1	6.3	6.2	10.2	12.0	13.0	12.0	
August	6.4	5.1	15.9	7.8	10.7	12.0	8.8	11.0	11.9	10.9	11.5	11.4	
September	4.1	5.7	16.7	6.3	4.7	9.5	9.7	9.6	15.5	14.2	10.7	12.9	
October	7.7	7.5	10.8	8.2	7.0	9.5	1.3	6.9	13.7	6.1	11.9	10.4	
November	6.3	7.5	8.7	6.8	11.3	12.3	3.7	9.7	13.4	12.2	5.4	9.3	
December	5.1	6.9	5.6	5.4	3.0	7.3	1.4	5.7	12.7	5.7	8.3	8.4	
<b>2003</b>													
January	7.5	5.0	1.7	6.2	6.7	5.0	-5.2	1.6	3.0	4.5	4.9	4.3	

(a) See paragraph 5 of Explanatory Notes.

RETAIL TURNOVER, By Sub-Group(a): **Original** *continued*

Month	RECREATIONAL GOOD RETAILING			OTHER RETAILING			HOSPITALITY & SERVICES				Total all industries
	News-paper, book & stationery retailing	Other recreational goods retailing	Total	Pharmaceutical, cosmetic & toiletry retailing	Other retailing n.e.c.	Total	Hotels & licensed clubs	Cafes & restaurants	Selected services	Total	
\$ MILLION											
<b>2002</b>											
January	368.5	207.7	576.2	525.2	751.3	1 276.5	1 261.9	756.7	207.6	2 226.1	13 618.3
February	357.6	173.2	530.7	503.5	699.2	1 202.6	1 170.3	707.6	188.2	2 066.0	12 148.2
March	384.3	204.9	589.2	542.1	765.3	1 307.4	1 286.7	779.2	199.8	2 265.6	13 553.9
April	369.7	191.1	560.8	579.6	732.2	1 311.7	1 264.8	761.8	205.2	2 231.8	13 273.0
May	385.6	194.2	579.8	621.1	789.1	1 410.2	1 285.6	780.6	216.8	2 283.0	14 031.0
June	356.1	190.7	546.8	576.1	709.6	1 285.7	1 254.1	744.1	212.3	2 210.5	13 354.3
July	395.2	196.3	591.4	634.6	717.5	1 352.1	1 358.8	800.8	221.6	2 381.3	13 830.3
August	433.1	208.2	641.3	628.0	770.9	1 399.0	1 374.5	839.8	226.2	2 440.4	14 144.9
September	386.0	199.8	585.9	611.6	778.1	1 389.6	1 344.4	792.7	215.8	2 353.0	13 726.4
October	371.6	208.2	579.8	610.5	863.7	1 474.2	1 338.9	r811.0	240.8	r2 390.8	r14 596.4
November	370.4	246.5	616.9	617.7	950.0	1 567.7	1 361.9	r838.6	237.9	r2 438.4	r15 191.8
December	483.1	400.0	883.0	736.2	1 367.7	2 103.9	1 505.2	r936.3	269.9	r2 711.4	r18 513.5
<b>2003</b>											
January	380.9	212.5	593.5	598.2	781.3	1 379.5	1 373.1	841.5	244.6	2 459.2	14 493.9
% CHANGE FROM PRECEDING MONTH											
<b>2002</b>											
January	-15.3	-44.6	-28.9	-25.2	-41.7	-35.9	-10.8	-13.6	-7.2	-11.5	-22.0
February	-3.0	-16.6	-7.9	-4.1	-6.9	-5.8	-7.3	-6.5	-9.3	-7.2	-10.8
March	7.5	18.3	11.0	7.7	9.5	8.7	9.9	10.1	6.2	9.7	11.6
April	-3.8	-6.7	-4.8	6.9	-4.3	0.3	-1.7	-2.2	2.7	-1.5	-2.1
May	4.3	1.6	3.4	7.2	7.8	7.5	1.6	2.5	5.7	2.3	5.7
June	-7.7	-1.8	-5.7	-7.2	-10.1	-8.8	-2.4	-4.7	-2.1	-3.2	-4.8
July	11.0	2.9	8.2	10.1	1.1	5.2	8.3	7.6	4.4	7.7	3.6
August	9.6	6.1	8.4	-1.0	7.4	3.5	1.2	4.9	2.1	2.5	2.3
September	-10.9	-4.0	-8.6	-2.6	0.9	-0.7	-2.2	-5.6	-4.6	-3.6	-3.0
October	-3.7	4.2	-1.0	-0.2	11.0	6.1	-0.4	2.3	11.6	1.6	6.3
November	-0.3	18.4	6.4	1.2	10.0	6.3	1.7	3.4	-1.2	2.0	4.1
December	30.4	62.3	43.1	19.2	44.0	34.2	10.5	11.6	13.4	11.2	21.9
<b>2003</b>											
January	-21.1	-46.9	-32.8	-18.7	-42.9	-34.4	-8.8	-10.1	-9.4	-9.3	-21.7
% CHANGE FROM CORRESPONDING MONTH OF PREVIOUS YEAR											
<b>2002</b>											
January	4.2	-1.2	2.2	8.2	8.2	8.2	6.8	-4.5	7.0	2.7	9.6
February	3.8	-3.1	1.4	6.5	3.7	4.9	7.6	-3.5	8.1	3.6	6.7
March	3.5	3.2	3.4	4.4	7.2	6.0	5.1	-6.8	2.4	0.5	5.9
April	17.9	-1.8	10.4	11.0	4.6	7.4	9.0	-3.5	11.9	4.6	7.4
May	16.4	2.7	11.4	8.9	6.7	7.6	10.6	-3.0	19.3	6.3	9.4
June	8.8	-2.7	4.5	5.3	3.6	4.3	6.2	-1.6	16.1	4.3	6.7
July	13.8	1.7	9.5	9.4	1.9	5.3	8.2	-1.0	19.1	5.8	7.4
August	19.9	6.7	15.3	3.9	5.5	4.8	6.8	1.0	21.6	5.9	8.3
September	19.0	1.9	12.6	8.2	5.5	6.7	5.3	1.6	17.0	5.0	7.3
October	6.4	6.3	6.4	3.1	7.4	5.6	4.8	1.2	25.9	5.3	7.5
November	3.3	7.0	4.8	2.8	7.7	5.7	6.1	3.8	20.8	6.6	7.5
December	11.0	6.7	9.0	4.8	6.2	5.7	6.3	6.9	20.7	7.8	6.1
<b>2003</b>											
January	3.4	2.3	3.0	13.9	4.0	8.1	8.8	11.2	17.8	10.5	6.4

r revised

(a) See paragraph 5 of Explanatory Notes.

## RETAIL TURNOVER, By State

Month	New South Wales	Victoria	Queensland	South Australia	Western Australia	Tasmania	Northern Territory	Australian Capital Territory	Australia
ORIGINAL (\$ million)									
<b>2001</b>									
November	4 938.0	3 369.8	2 629.1	1 044.9	1 402.0	294.0	146.0	304.2	14 127.8
December	6 137.0	4 218.4	3 234.4	1 273.0	1 704.9	359.0	154.3	375.4	17 456.3
<b>2002</b>									
January	4 745.6	3 212.7	2 604.6	1 003.2	1 354.4	286.2	131.2	280.4	13 618.3
February	4 226.5	2 897.3	2 261.8	903.0	1 216.4	260.6	120.4	262.1	12 148.2
March	4 669.3	3 258.4	2 533.7	1 034.4	1 340.9	289.6	136.7	290.9	13 553.9
April	4 632.9	3 182.9	2 468.7	989.4	1 296.7	277.6	139.0	285.8	13 273.0
May	4 907.7	3 332.6	2 632.5	1 043.3	1 371.3	293.0	150.6	300.0	14 031.0
June	4 614.7	3 195.2	2 542.5	988.1	1 298.2	275.8	151.0	288.7	13 354.3
July	4 807.5	3 303.3	2 660.9	1 031.6	1 307.5	272.2	161.7	285.6	13 830.3
August	4 938.2	3 328.4	2 705.4	1 067.4	1 361.2	281.0	164.9	298.4	14 144.9
September	4 820.0	3 219.2	2 667.5	1 029.2	1 282.2	269.6	152.1	286.6	13 726.4
October	5 082.3	3 407.1	r2 813.5	1 093.4	r1 442.0	297.9	153.2	306.9	r14 596.4
November	5 298.1	3 582.2	r2 882.5	1 151.9	r1 490.7	313.1	150.7	322.7	r15 191.8
December	6 468.0	4 435.2	r3 467.6	1 385.9	r1 823.0	387.9	162.7	383.1	r18 513.5
<b>2003</b>									
January	5 036.9	3 407.3	2 829.6	1 085.2	1 412.3	299.5	135.2	288.0	14 493.9
SEASONALLY ADJUSTED (\$ million)									
<b>2001</b>									
November	4 735.9	3 203.1	2 536.4	973.8	1 331.5	278.1	143.9	291.5	13 494.2
December	4 769.0	3 217.0	2 563.1	997.2	1 326.2	279.9	140.1	290.8	13 583.3
<b>2002</b>									
January	4 781.6	3 275.3	2 572.4	1 011.9	1 373.5	286.5	145.3	295.8	13 742.3
February	4 777.6	3 286.6	2 568.7	1 032.8	1 348.4	284.3	144.1	298.5	13 741.0
March	4 779.8	3 314.2	2 612.5	1 038.3	1 359.7	284.9	144.9	295.4	13 829.7
April	4 854.4	3 347.6	2 631.1	1 045.1	1 361.0	289.6	147.6	297.8	13 974.2
May	4 913.5	3 359.6	2 670.6	1 053.4	1 384.1	294.2	148.8	298.6	14 122.8
June	4 934.5	3 405.4	2 674.2	1 061.5	1 390.2	294.5	149.5	303.2	14 213.0
July	4 950.0	3 400.7	2 721.6	1 068.4	1 366.8	291.3	150.4	286.9	14 236.0
August	5 006.6	3 397.2	2 707.0	1 078.2	1 378.0	291.9	149.2	303.1	14 311.1
September	5 020.9	3 405.1	2 763.9	1 083.4	1 378.3	291.3	150.5	303.5	14 397.0
October	5 019.7	3 373.2	2 749.4	1 071.9	1 397.0	295.4	146.8	303.3	14 356.7
November	5 121.0	3 417.8	2 791.7	1 084.8	1 411.7	299.3	148.0	306.9	14 581.0
December	5 040.4	3 394.9	2 762.6	1 083.7	1 424.6	299.4	147.7	300.4	14 453.6
<b>2003</b>									
January	5 018.9	3 419.2	2 776.1	1 088.0	1 426.4	298.3	149.0	302.8	14 478.7
TREND ESTIMATES (\$ million)									
<b>2001</b>									
November	4 742.1	3 211.8	2 537.5	988.7	1 325.8	278.7	141.5	291.6	13 517.7
December	4 754.7	3 234.7	2 551.7	999.2	1 337.7	280.8	142.6	293.1	13 594.6
<b>2002</b>									
January	4 769.7	3 261.0	2 568.6	1 011.6	1 348.5	283.1	143.7	294.8	13 681.0
February	4 790.0	3 289.3	2 588.1	1 024.6	1 357.7	285.4	144.8	296.3	13 776.2
March	4 816.6	3 317.6	2 609.4	1 036.4	1 364.9	287.8	146.0	297.2	13 876.0
April	4 850.9	3 345.7	2 633.4	1 046.9	1 370.0	289.8	147.2	297.6	13 981.5
May	4 888.7	3 369.4	2 658.6	1 055.6	1 373.3	291.3	148.5	297.5	14 082.9
June	4 927.9	3 386.0	2 683.9	1 062.7	1 375.4	292.1	149.4	297.8	14 175.2
July	4 966.4	3 395.7	2 707.9	1 069.0	1 377.7	292.6	149.7	298.6	14 257.6
August	4 998.4	3 399.3	2 728.0	1 073.9	1 381.7	293.2	149.5	300.0	14 324.0
September	5 021.8	3 399.3	2 744.4	1 077.6	1 387.8	294.0	149.1	301.4	14 375.1
October	5 039.1	3 399.6	2 757.7	1 080.3	1 396.6	295.3	148.6	302.7	14 419.7
November	5 051.4	3 401.3	2 768.7	1 082.6	1 407.1	296.8	148.2	303.5	14 459.6
December	5 058.9	3 403.8	2 777.9	1 084.9	1 417.6	298.2	148.0	303.9	14 493.3
<b>2003</b>									
January	5 061.8	3 407.6	2 783.5	1 086.7	1 429.1	299.5	147.8	304.8	14 521.8

r revised

## RETAIL TURNOVER PERCENTAGE CHANGE, By State

Month	New South Wales	Victoria	Queensland	South Australia	Western Australia	Tasmania	Northern Territory	Australian Capital Territory	Australia
ORIGINAL (% change from preceding month)									
<b>2001</b>									
November	3.8	4.1	2.9	5.8	5.2	7.1	-0.7	4.9	4.0
December	24.3	25.2	23.0	21.8	21.6	22.1	5.7	23.4	23.6
<b>2002</b>									
January	-22.7	-23.8	-19.5	-21.2	-20.6	-20.3	-15.0	-25.3	-22.0
February	-10.9	-9.8	-13.2	-10.0	-10.2	-8.9	-8.2	-6.5	-10.8
March	10.5	12.5	12.0	14.6	10.2	11.1	13.6	11.0	11.6
April	-0.8	-2.3	-2.6	-4.3	-3.3	-4.1	1.6	-1.7	-2.1
May	5.9	4.7	6.6	5.5	5.8	5.5	8.3	5.0	5.7
June	-6.0	-4.1	-3.4	-5.3	-5.3	-5.9	0.3	-3.8	-4.8
July	4.2	3.4	4.7	4.4	0.7	-1.3	7.1	-1.1	3.6
August	2.7	0.8	1.7	3.5	4.1	3.2	2.0	4.5	2.3
September	-2.4	-3.3	-1.4	-3.6	-5.8	-4.1	-7.8	-4.0	-3.0
October	5.4	5.8	5.5	6.2	12.5	10.5	0.7	7.1	6.3
November	4.2	5.1	2.5	5.3	3.4	5.1	-1.6	5.1	4.1
December	22.1	23.8	20.3	20.3	22.3	23.9	8.0	18.7	21.9
<b>2003</b>									
January	-22.1	-23.2	-18.4	-21.7	-22.5	-22.8	-16.9	-24.8	-21.7
SEASONALLY ADJUSTED (% change from preceding month)									
<b>2001</b>									
November	0.1	-0.4	0.1	-1.4	2.0	0.1	1.4	0.8	0.1
December	0.7	0.4	1.1	2.4	-0.4	0.7	-2.7	-0.2	0.7
<b>2002</b>									
January	0.3	1.8	0.4	1.5	3.6	2.3	3.7	1.7	1.2
February	-0.1	0.3	-0.1	2.1	-1.8	-0.8	-0.8	0.9	0.0
March	0.0	0.8	1.7	0.5	0.8	0.2	0.6	-1.0	0.6
April	1.6	1.0	0.7	0.7	0.1	1.7	1.8	0.8	1.0
May	1.2	0.4	1.5	0.8	1.7	1.6	0.8	0.3	1.1
June	0.4	1.4	0.1	0.8	0.4	0.1	0.5	1.5	0.6
July	0.3	-0.1	1.8	0.6	-1.7	-1.1	0.6	-5.4	0.2
August	1.1	-0.1	-0.5	0.9	0.8	0.2	-0.8	5.7	0.5
September	0.3	0.2	2.1	0.5	0.0	-0.2	0.8	0.1	0.6
October	0.0	-0.9	-0.5	-1.1	1.4	1.4	-2.4	-0.1	-0.3
November	2.0	1.3	1.5	1.2	1.1	1.3	0.8	1.2	1.6
December	-1.6	-0.7	-1.0	-0.1	0.9	0.0	-0.2	-2.1	-0.9
<b>2003</b>									
January	-0.4	0.7	0.5	0.4	0.1	-0.4	0.9	0.8	0.2
TREND ESTIMATES (% change from preceding month)									
<b>2001</b>									
November	0.3	0.6	0.4	0.8	1.1	0.8	0.8	0.6	0.5
December	0.3	0.7	0.6	1.1	0.9	0.8	0.8	0.5	0.6
<b>2002</b>									
January	0.3	0.8	0.7	1.2	0.8	0.8	0.8	0.6	0.6
February	0.4	0.9	0.8	1.3	0.7	0.8	0.8	0.5	0.7
March	0.6	0.9	0.8	1.2	0.5	0.8	0.8	0.3	0.7
April	0.7	0.8	0.9	1.0	0.4	0.7	0.9	0.1	0.8
May	0.8	0.7	1.0	0.8	0.2	0.5	0.9	0.0	0.7
June	0.8	0.5	1.0	0.7	0.2	0.3	0.6	0.1	0.7
July	0.8	0.3	0.9	0.6	0.2	0.2	0.2	0.3	0.6
August	0.6	0.1	0.7	0.5	0.3	0.2	-0.1	0.5	0.5
September	0.5	0.0	0.6	0.3	0.4	0.3	-0.3	0.5	0.4
October	0.3	0.0	0.5	0.2	0.6	0.4	-0.3	0.4	0.3
November	0.2	0.1	0.4	0.2	0.7	0.5	-0.2	0.3	0.3
December	0.1	0.1	0.3	0.2	0.7	0.5	-0.2	0.1	0.2
<b>2003</b>									
January	0.1	0.1	0.2	0.2	0.8	0.4	-0.1	0.3	0.2

## RETAIL TURNOVER, By Industry Group(a)—New South Wales

Month	Food retailing	Department stores	Clothing and soft good retailing	Household good retailing	Recreational good retailing	Other retailing	Hospitality and services	Total
ORIGINAL (\$ million)								
<b>2001</b>								
November	1 849.2	459.1	321.0	572.4	205.4	531.9	999.0	4 938.0
December	2 086.3	792.5	464.8	718.0	268.6	723.1	1 083.6	6 137.0
<b>2002</b>								
January	1 930.5	351.7	333.3	559.5	187.7	443.2	939.6	4 745.6
February	1 713.7	290.9	272.1	472.0	180.9	420.1	876.9	4 226.5
March	1 893.5	350.5	304.5	517.1	207.0	456.3	940.4	4 669.3
April	1 795.4	364.4	303.1	545.7	197.3	466.1	960.8	4 632.9
May	1 868.8	420.1	339.3	587.1	200.0	499.5	993.0	4 907.7
June	1 767.6	381.1	290.5	585.4	188.3	447.4	954.4	4 614.7
July	1 862.0	361.2	297.0	626.1	202.9	476.3	982.0	4 807.5
August	1 908.7	367.2	292.7	630.7	223.5	499.8	1 015.7	4 938.2
September	1 849.5	364.5	304.0	611.7	197.2	504.2	989.1	4 820.0
October	1 980.8	417.2	329.1	647.2	186.6	513.6	1 007.8	5 082.3
November	1 971.9	507.9	345.1	685.1	210.8	564.0	1 013.3	5 298.1
December	2 196.9	801.2	483.1	830.0	283.5	758.4	1 114.8	6 468.0
<b>2003</b>								
January	2 022.5	369.8	319.4	629.2	189.5	472.8	1 033.7	5 036.9
SEASONALLY ADJUSTED (\$ million)								
<b>2001</b>								
November	1 819.6	399.0	306.5	540.4	196.2	489.0	985.1	4 735.9
December	1 832.3	408.3	318.3	557.9	195.8	496.3	960.1	4 769.0
<b>2002</b>								
January	1 873.0	399.8	343.1	563.1	196.5	477.2	929.0	4 781.6
February	1 852.3	412.7	343.5	527.9	200.1	481.4	959.7	4 777.6
March	1 861.5	408.7	327.3	546.8	208.7	494.4	932.5	4 779.8
April	1 849.1	402.4	317.8	600.3	204.8	494.4	985.6	4 854.4
May	1 880.4	418.0	319.1	596.4	209.5	493.5	996.6	4 913.5
June	1 863.8	443.2	313.3	596.7	209.4	498.2	1 009.8	4 934.5
July	1 929.8	380.4	312.6	631.9	206.2	502.9	986.3	4 950.0
August	1 902.7	405.7	317.9	634.5	221.4	521.8	1 002.5	5 006.6
September	1 923.2	417.8	322.3	637.5	202.6	519.4	998.1	5 020.9
October	1 925.9	419.9	322.5	640.5	196.7	511.9	1 002.2	5 019.7
November	1 950.1	444.2	329.2	657.6	204.5	532.0	1 003.4	5 121.0
December	1 936.9	415.1	324.0	639.8	202.7	515.9	1 006.0	5 040.4
<b>2003</b>								
January	1 949.5	423.1	325.4	628.1	194.1	497.0	1 001.7	5 018.9
TREND ESTIMATES (\$ million)								
<b>2001</b>								
November	1 822.8	399.6	315.8	543.3	194.8	488.9	978.5	4 742.1
December	1 838.3	403.1	323.8	544.7	196.4	489.2	962.0	4 754.7
<b>2002</b>								
January	1 849.0	406.0	329.8	548.2	198.8	489.3	951.4	4 769.7
February	1 855.6	408.2	331.8	554.3	201.4	489.4	950.9	4 790.0
March	1 860.3	409.4	329.6	564.1	204.1	490.0	959.1	4 816.6
April	1 866.0	410.2	324.8	577.5	206.8	492.3	972.0	4 850.9
May	1 874.2	410.3	319.3	593.0	209.1	496.0	985.0	4 888.7
June	1 885.4	410.5	315.7	608.8	210.2	501.3	994.9	4 927.9
July	1 898.8	411.8	315.3	623.1	210.1	507.7	1 000.1	4 966.4
August	1 911.9	414.2	317.5	632.9	208.7	513.3	1 001.3	4 998.4
September	1 922.6	417.6	320.4	638.6	206.6	517.2	1 001.0	5 021.8
October	1 930.9	421.0	322.9	642.3	204.1	518.6	1 001.3	5 039.1
November	1 937.9	424.0	324.8	643.6	201.6	517.8	1 002.5	5 051.4
December	1 944.1	426.0	326.2	643.1	199.3	515.6	1 003.4	5 058.9
<b>2003</b>								
January	1 946.6	427.7	327.1	640.3	197.4	512.3	1 005.0	5 061.8

(a) See paragraph 5 of the Explanatory Notes.

## RETAIL TURNOVER, By Industry Group(a)—Victoria

Month	Food retailing	Department stores	Clothing and soft good retailing	Household good retailing	Recreational good retailing	Other retailing	Hospitality and services	Total
ORIGINAL (\$ million)								
<b>2001</b>								
November	1 378.2	322.5	225.8	530.2	138.8	325.6	448.8	3 369.8
December	1 546.4	563.8	316.7	648.2	195.1	444.2	503.8	4 218.4
<b>2002</b>								
January	1 385.9	247.9	209.5	505.3	140.1	288.6	435.3	3 212.7
February	1 255.9	203.0	180.3	444.1	121.7	272.5	419.8	2 897.3
March	1 406.9	261.2	213.3	484.9	135.0	288.8	468.4	3 258.4
April	1 310.9	273.3	250.3	495.2	126.4	296.0	430.9	3 182.9
May	1 384.8	287.1	257.9	512.4	138.7	322.2	429.6	3 332.6
June	1 301.6	295.2	233.0	534.3	126.7	284.3	420.0	3 195.2
July	1 377.2	261.0	233.4	502.4	145.1	304.7	479.5	3 303.3
August	1 412.8	246.4	230.6	496.2	154.6	319.8	468.1	3 328.4
September	1 365.1	247.3	236.2	478.3	138.1	318.1	436.0	3 219.2
October	1 460.6	285.3	252.2	514.0	141.3	334.5	419.2	3 407.1
November	1 483.9	364.2	265.6	536.2	147.2	350.6	434.4	3 582.2
December	1 625.2	580.8	341.3	674.6	230.2	483.2	500.0	4 435.2
<b>2003</b>								
January	1 506.9	264.7	209.2	502.8	139.0	310.9	473.7	3 407.3
SEASONALLY ADJUSTED (\$ million)								
<b>2001</b>								
November	1 334.2	287.1	213.3	495.9	132.9	299.0	440.8	3 203.1
December	1 336.0	284.5	219.5	495.7	126.0	308.7	446.7	3 217.0
<b>2002</b>								
January	1 358.4	284.4	225.7	505.2	135.3	321.6	444.7	3 275.3
February	1 357.0	287.9	228.3	498.5	139.5	319.0	456.4	3 286.6
March	1 370.8	291.9	230.2	517.5	145.5	309.9	448.4	3 314.2
April	1 381.1	295.1	239.3	534.3	139.4	314.7	443.7	3 347.6
May	1 390.1	298.1	243.4	523.4	147.8	325.8	431.1	3 359.6
June	1 389.1	319.5	240.4	549.1	141.4	316.8	449.1	3 405.4
July	1 409.3	276.3	243.8	518.0	153.0	321.2	479.0	3 400.7
August	1 402.5	285.0	255.7	514.3	158.8	324.9	456.1	3 397.2
September	1 428.8	288.3	258.2	505.7	144.6	330.0	449.6	3 405.1
October	1 438.1	292.6	251.1	504.9	147.0	319.8	419.7	3 373.2
November	1 444.1	321.9	249.9	500.0	141.4	329.1	431.3	3 417.8
December	1 429.1	297.8	237.5	514.1	146.7	324.9	444.8	3 394.9
<b>2003</b>								
January	1 440.4	307.0	224.2	500.5	133.4	346.9	466.8	3 419.2
TREND ESTIMATES (\$ million)								
<b>2001</b>								
November	1 335.2	283.5	217.5	499.6	130.9	305.4	440.8	3 211.8
December	1 343.1	284.9	220.2	501.2	132.8	308.6	445.1	3 234.7
<b>2002</b>								
January	1 351.4	286.9	224.0	504.2	135.3	312.1	447.2	3 261.0
February	1 360.7	289.6	228.2	510.1	137.8	315.2	447.1	3 289.3
March	1 369.9	292.4	232.3	517.8	140.6	317.0	446.4	3 317.6
April	1 378.7	294.8	236.5	525.2	143.5	318.1	447.5	3 345.7
May	1 386.8	295.4	240.7	529.6	146.3	319.1	450.2	3 369.4
June	1 395.4	294.6	245.0	529.0	148.4	320.5	452.6	3 386.0
July	1 404.9	293.4	249.2	524.3	149.7	322.0	452.6	3 395.7
August	1 414.5	293.2	251.9	517.4	150.1	323.3	450.1	3 399.3
September	1 423.2	294.8	252.0	511.0	149.0	324.5	446.1	3 399.3
October	1 430.5	297.8	249.8	506.9	146.8	(b)326.4	442.5	3 399.6
November	1 436.1	301.5	245.7	504.4	144.2	329.0	441.0	3 401.3
December	1 440.0	304.8	240.6	502.8	141.5	332.1	442.0	3 403.8
<b>2003</b>								
January	1 442.0	307.9	235.2	503.4	138.6	335.0	444.0	3 407.6

(a) See paragraph 5 of the Explanatory Notes.

(b) Break in series. See the 'Trend Estimates' section of the Explanatory Notes.

## RETAIL TURNOVER, By Industry Group(a)—Queensland

Month	Food retailing	Department stores	Clothing and soft good retailing	Household good retailing	Recreational good retailing	Other retailing	Hospitality and services	Total
ORIGINAL (\$ million)								
<b>2001</b>								
November	1 038.8	219.1	174.5	394.3	114.1	277.4	411.0	2 629.1
December	1 146.7	374.4	246.0	472.8	160.9	384.6	449.1	3 234.4
<b>2002</b>								
January	1 080.9	178.0	179.3	395.3	120.8	246.2	404.0	2 604.6
February	963.4	134.8	128.5	343.6	105.9	228.1	357.5	2 261.8
March	1 090.9	167.4	145.6	364.4	113.6	252.2	399.6	2 533.7
April	1 026.2	168.1	151.1	363.8	114.1	244.0	401.4	2 468.7
May	1 089.1	188.3	165.4	394.3	116.1	262.5	416.9	2 632.5
June	1 022.9	183.9	157.5	403.2	113.2	252.3	409.5	2 542.5
July	1 077.7	181.3	160.5	417.7	109.9	252.9	460.8	2 660.9
August	1 095.1	183.0	162.8	422.2	122.5	246.8	472.9	2 705.4
September	1 048.5	186.3	177.2	424.5	124.0	245.5	461.3	2 667.5
October	1 110.9	204.3	184.4	424.3	120.4	299.0	r470.2	r2 813.5
November	1 090.4	247.9	191.2	434.1	121.3	307.7	r489.9	r2 882.5
December	1 184.4	384.9	260.4	512.1	168.7	419.4	r537.7	r3 467.6
<b>2003</b>								
January	1 141.8	188.5	200.9	398.1	121.4	304.7	474.1	2 829.6
SEASONALLY ADJUSTED (\$ million)								
<b>2001</b>								
November	1 039.0	193.0	167.9	376.5	107.4	260.6	392.0	2 536.4
December	1 045.9	197.6	174.6	376.0	111.0	272.4	385.5	2 563.1
<b>2002</b>								
January	1 049.5	193.5	172.0	383.3	118.2	254.3	401.6	2 572.4
February	1 047.2	190.3	160.8	381.8	120.2	266.5	401.8	2 568.7
March	1 062.1	196.1	171.1	382.8	120.5	275.1	404.8	2 612.5
April	1 059.2	195.2	165.6	397.3	125.2	264.4	424.1	2 631.1
May	1 074.0	201.3	168.8	406.9	126.6	264.9	428.2	2 670.6
June	1 071.7	201.3	167.9	419.4	125.0	265.7	423.3	2 674.2
July	1 092.1	190.4	162.5	421.2	117.8	263.8	473.9	2 721.6
August	1 085.0	200.3	171.8	421.3	124.0	245.1	459.6	2 707.0
September	1 082.3	201.4	172.4	445.1	130.4	265.2	467.2	2 763.9
October	1 089.5	202.9	174.4	421.2	118.0	286.7	456.8	2 749.4
November	1 095.8	218.0	183.6	414.4	118.0	291.2	470.8	2 791.7
December	1 082.4	205.7	184.1	406.8	118.9	299.3	465.3	2 762.6
<b>2003</b>								
January	1 094.9	208.1	188.3	382.9	117.5	319.4	464.9	2 776.1
TREND ESTIMATES (\$ million)								
<b>2001</b>								
November	1 039.5	191.1	168.8	367.3	110.7	260.0	400.5	2 537.5
December	1 043.9	192.9	169.7	374.0	112.8	262.7	395.9	2 551.7
<b>2002</b>								
January	1 048.2	194.4	169.7	379.7	115.9	265.0	395.6	2 568.6
February	1 052.7	195.3	168.9	385.1	119.3	266.9	399.9	2 588.1
March	1 058.1	195.7	167.7	390.5	121.9	267.6	407.9	2 609.4
April	1 064.3	196.2	166.8	397.4	123.5	266.4	418.6	2 633.4
May	1 070.8	196.7	166.4	406.3	124.4	263.9	430.1	2 658.6
June	1 077.0	197.3	166.7	415.6	124.5	261.3	441.5	2 683.9
July	1 082.0	198.4	167.8	423.7	124.2	260.2	451.7	2 707.9
August	1 085.4	200.0	169.8	427.6	123.5	262.5	459.2	2 728.0
September	1 087.4	202.4	172.9	426.6	122.5	269.5	463.5	2 744.4
October	1 088.6	205.1	176.7	421.7	121.3	279.3	465.5	2 757.7
November	1 089.6	207.5	180.5	414.7	120.1	290.1	466.3	2 768.7
December	1 090.6	209.4	184.0	406.6	118.8	300.6	466.7	2 777.9
<b>2003</b>								
January	1 090.7	211.0	187.1	398.6	117.9	310.3	465.0	2 783.5

r revised

(a) See paragraph 5 of the Explanatory Notes.



## RETAIL TURNOVER, By Industry Group(a)—South Australia

Month	Food retailing	Department stores	Clothing and soft good retailing	Household good retailing	Recreational good retailing	Other retailing	Hospitality and services	Total
ORIGINAL (\$ million)								
<b>2001</b>								
November	438.3	114.4	51.5	134.2	29.7	118.7	158.2	1 044.9
December	486.4	184.3	69.0	156.9	45.0	149.3	182.1	1 273.0
<b>2002</b>								
January	440.0	86.8	48.9	128.0	28.2	100.8	170.6	1 003.2
February	392.6	69.9	39.9	119.0	26.1	97.5	158.2	903.0
March	452.2	90.7	50.2	122.3	30.6	110.4	177.9	1 034.4
April	414.0	89.3	53.8	128.9	24.2	113.6	165.7	989.4
May	440.9	97.7	56.0	140.8	24.7	118.6	164.7	1 043.3
June	406.9	97.3	54.9	136.3	22.7	110.9	159.2	988.1
July	438.1	91.8	53.2	131.8	28.3	113.3	175.2	1 031.6
August	458.9	88.7	50.9	128.4	31.4	122.9	186.3	1 067.4
September	429.7	87.0	51.9	127.9	30.0	119.7	183.1	1 029.2
October	463.4	97.8	59.0	140.7	32.5	118.1	181.9	1 093.4
November	464.6	125.9	64.2	149.6	33.2	127.0	187.4	1 151.9
December	517.5	190.7	84.6	177.4	51.2	151.9	212.6	1 385.9
<b>2003</b>								
January	466.1	91.6	59.6	133.4	34.1	108.1	192.4	1 085.2
SEASONALLY ADJUSTED (\$ million)								
<b>2001</b>								
November	420.2	98.0	48.1	122.3	27.0	109.5	148.5	973.8
December	428.3	99.3	49.1	123.6	28.9	112.0	156.1	997.2
<b>2002</b>								
January	425.8	98.7	52.2	130.9	28.4	108.3	167.6	1 011.9
February	431.0	98.5	53.8	135.6	29.6	112.4	172.0	1 032.8
March	433.1	100.6	53.6	134.5	30.0	114.8	171.6	1 038.3
April	436.4	97.9	52.3	137.6	28.3	118.4	174.3	1 045.1
May	440.9	100.4	53.5	142.4	27.4	117.5	171.3	1 053.4
June	436.3	108.0	55.1	141.6	26.0	120.3	174.1	1 061.5
July	455.7	92.3	53.8	136.1	30.0	117.9	182.6	1 068.4
August	449.9	99.1	55.3	128.3	32.8	125.7	187.1	1 078.2
September	452.9	99.8	55.9	134.2	31.6	123.1	185.8	1 083.4
October	449.5	102.2	58.0	133.7	32.7	117.8	178.0	1 071.9
November	451.0	106.0	59.6	138.6	31.9	118.4	179.4	1 084.8
December	456.9	105.1	61.6	137.2	33.0	111.9	177.9	1 083.7
<b>2003</b>								
January	450.5	105.3	62.9	134.4	34.2	115.3	185.5	1 088.0
TREND ESTIMATES (\$ million)								
<b>2001</b>								
November	423.1	97.1	49.3	123.3	27.3	112.2	156.4	988.7
December	425.6	98.2	50.2	126.2	28.0	111.7	159.5	999.2
<b>2002</b>								
January	427.9	98.9	51.3	129.6	28.7	111.7	163.5	1 011.6
February	430.3	99.3	52.3	133.4	28.9	112.5	167.5	1 024.6
March	433.1	99.4	53.1	136.6	28.7	114.1	170.8	1 036.4
April	436.4	99.4	53.6	138.6	28.3	116.3	173.5	1 046.9
May	440.3	99.4	53.8	139.0	28.3	118.4	175.8	1 055.6
June	444.0	99.6	54.0	137.9	28.7	120.2	178.2	1 062.7
July	447.4	99.9	54.5	136.3	29.5	121.4	180.4	1 069.0
August	449.9	100.5	55.4	135.0	30.6	121.5	181.9	1 073.9
September	451.4	101.5	56.6	134.3	31.6	120.7	182.3	1 077.6
October	452.2	102.6	58.0	134.5	32.4	119.3	182.0	1 080.3
November	452.6	103.8	59.5	135.1	32.9	117.6	181.4	1 082.6
December	452.9	104.8	60.9	135.7	33.3	115.8	181.0	1 084.9
<b>2003</b>								
January	452.4	105.6	62.2	136.5	33.5	114.4	180.6	1 086.7

(a) See paragraph 5 of the Explanatory Notes.

Month	Food retailing	Department stores	Clothing and soft good retailing	Household good retailing	Recreational good retailing	Other retailing	Hospitality and services	Total
ORIGINAL (\$ million)								
<b>2001</b>								
November	577.1	140.1	97.9	205.7	65.9	152.9	162.5	1 402.0
December	654.9	211.8	128.5	245.5	90.9	187.7	185.6	1 704.9
<b>2002</b>								
January	599.8	95.7	83.5	202.6	65.7	129.9	177.2	1 354.4
February	547.4	83.3	71.0	172.8	61.8	121.0	159.2	1 216.4
March	608.0	100.3	78.2	185.3	68.7	126.6	173.8	1 340.9
April	566.7	104.2	89.7	177.4	66.6	120.3	171.7	1 296.7
May	596.5	112.7	97.0	193.3	66.5	131.7	173.6	1 371.3
June	558.8	105.7	89.9	194.1	63.9	122.2	163.6	1 298.2
July	579.3	104.4	82.5	168.1	71.1	128.4	173.7	1 307.5
August	604.1	104.8	83.8	179.1	73.8	130.9	184.7	1 361.2
September	568.0	100.3	78.4	170.3	64.6	124.2	176.3	1 282.2
October	630.1	122.3	86.9	206.5	67.2	131.1	r197.8	r1 442.0
November	641.3	149.1	91.5	207.1	70.0	134.5	r197.1	r1 490.7
December	719.2	231.1	127.3	240.9	100.0	182.8	r221.7	r1 823.0
<b>2003</b>								
January	648.1	109.9	82.3	201.1	77.1	114.2	179.7	1 412.3
SEASONALLY ADJUSTED (\$ million)								
<b>2001</b>								
November	564.0	124.6	89.4	193.8	65.8	139.8	154.1	1 331.5
December	570.5	110.3	88.9	193.0	67.1	135.1	161.3	1 326.2
<b>2002</b>								
January	592.0	111.3	88.9	199.8	66.3	135.3	179.9	1 373.5
February	583.7	112.7	87.9	191.8	68.1	134.4	169.7	1 348.4
March	587.6	113.2	87.2	196.6	72.4	133.5	169.2	1 359.7
April	585.2	114.1	91.0	191.8	69.6	131.5	177.7	1 361.0
May	596.5	112.7	90.1	198.1	68.8	137.7	180.2	1 384.1
June	597.7	118.5	91.6	197.5	68.8	138.4	177.7	1 390.2
July	602.0	110.4	87.3	177.3	70.7	136.7	182.4	1 366.8
August	599.8	115.7	89.2	183.4	73.0	133.5	183.5	1 378.0
September	608.2	119.6	89.0	181.4	68.9	128.2	182.9	1 378.3
October	615.8	122.2	85.8	194.0	70.5	123.8	184.9	1 397.0
November	625.4	129.6	83.0	194.1	67.2	123.0	189.4	1 411.7
December	628.8	124.8	88.7	191.0	72.7	129.2	189.4	1 424.6
<b>2003</b>								
January	633.1	128.4	87.4	201.2	76.2	120.3	179.8	1 426.4
TREND ESTIMATES (\$ million)								
<b>2001</b>								
November	568.0	110.5	87.6	196.0	65.6	137.3	157.4	1 325.8
December	572.3	111.1	88.3	194.9	66.4	136.9	161.6	1 337.7
<b>2002</b>								
January	(b) 582.6	111.8	88.7	195.0	67.5	135.8	(b) 169.8	1 348.5
February	585.7	112.4	89.0	195.5	68.5	134.7	172.6	1 357.7
March	588.4	112.9	89.3	195.8	69.3	134.5	174.7	1 364.9
April	590.8	113.2	89.5	194.7	69.8	135.1	176.4	1 370.0
May	593.2	113.4	89.9	192.4	70.1	136.0	177.9	1 373.3
June	596.1	114.0	89.9	189.5	70.2	135.9	179.5	1 375.4
July	599.9	115.2	89.3	187.0	70.1	134.7	181.5	1 377.7
August	604.7	117.3	88.4	185.8	70.0	132.5	183.3	1 381.7
September	610.1	119.8	87.5	186.4	70.1	129.7	184.5	1 387.8
October	616.0	122.5	86.8	188.7	70.4	127.1	185.5	1 396.6
November	622.0	125.0	86.5	191.7	71.0	125.0	186.1	1 407.1
December	627.6	127.0	86.3	194.6	71.8	123.4	186.2	1 417.6
<b>2003</b>								
January	632.2	128.7	86.5	198.0	72.7	122.3	185.7	1 429.1

r revised

(b) Break in series. See the Trend Estimates' section of the Explanatory Notes.

(a) See paragraph 5 of the Explanatory Notes.

Month	Food retailing	Department stores	Clothing and soft good retailing	Household good retailing	Recreational good retailing	Other retailing	Hospitality and services	Total
ORIGINAL (\$ million)								
<b>2001</b>								
November	119.6	np	17.6	45.5	17.2	np	31.9	294.0
December	132.7	np	22.9	56.5	24.9	np	34.7	359.0
<b>2002</b>								
January	126.0	np	15.6	42.8	16.9	np	32.2	286.2
February	114.4	np	14.7	38.4	16.6	np	29.9	260.6
March	127.5	np	15.9	42.1	16.6	np	32.1	289.6
April	119.3	np	16.5	43.4	14.6	np	29.3	277.6
May	124.5	np	18.1	45.9	15.3	np	30.0	293.0
June	116.6	np	16.1	46.9	14.4	np	27.9	275.8
July	115.1	np	14.8	44.3	14.3	np	28.7	272.2
August	119.4	np	15.3	47.0	14.8	np	29.5	281.0
September	112.7	np	14.3	44.7	13.7	np	29.7	269.6
October	125.6	np	14.4	49.0	14.2	np	32.8	297.9
November	124.1	np	18.1	49.6	15.7	np	35.1	313.1
December	136.0	np	25.0	59.7	24.7	np	42.3	387.9
<b>2003</b>								
January	129.2	np	15.8	44.9	15.5	np	33.7	299.5
SEASONALLY ADJUSTED (\$ million)								
<b>2001</b>								
November	117.5	np	15.8	42.5	16.2	np	30.3	278.1
December	118.3	np	15.9	43.6	16.2	np	29.4	279.9
<b>2002</b>								
January	122.1	np	16.6	44.1	16.1	np	30.1	286.5
February	120.6	np	16.7	44.0	16.8	np	30.2	284.3
March	120.2	np	16.5	44.6	17.1	np	28.7	284.9
April	125.1	np	15.8	45.6	15.5	np	29.3	289.6
May	123.5	np	17.0	46.6	16.4	np	30.7	294.2
June	123.3	np	16.7	47.4	16.5	np	31.3	294.5
July	120.9	np	16.2	47.1	16.0	np	32.4	291.3
August	119.8	np	17.6	48.1	16.3	np	32.4	291.9
September	119.1	np	16.2	47.4	15.6	np	32.7	291.3
October	122.6	np	15.8	47.0	14.9	np	33.0	295.4
November	123.4	np	16.6	46.6	15.4	np	33.7	299.3
December	121.7	np	17.0	45.5	16.7	np	34.5	299.4
<b>2003</b>								
January	123.6	np	16.6	46.6	14.8	np	31.4	298.3
TREND ESTIMATES (\$ million)								
<b>2001</b>								
November	118.9	np	15.8	42.1	16.1	np	30.3	278.7
December	119.2	np	16.2	42.9	16.3	np	30.0	280.8
<b>2002</b>								
January	119.9	np	16.4	43.7	16.4	np	29.7	283.1
February	121.1	np	16.5	44.4	16.4	np	29.5	285.4
March	122.2	np	16.5	45.1	16.4	np	29.6	287.8
April	122.9	np	16.5	45.7	16.4	np	29.9	289.8
May	122.8	np	16.6	46.4	16.3	np	30.5	291.3
June	122.3	np	16.6	47.0	16.2	np	31.1	292.1
July	121.6	np	16.6	47.4	16.0	np	31.8	292.6
August	121.1	np	16.6	47.5	15.9	np	32.5	293.2
September	121.0	np	16.5	47.3	15.7	np	32.9	294.0
October	121.4	np	16.5	47.0	15.6	np	33.1	295.3
November	122.0	np	16.5	46.6	15.5	np	33.3	296.8
December	122.6	np	16.6	46.3	15.5	np	33.2	298.2
<b>2003</b>								
January	123.2	np	16.6	46.1	15.4	np	33.1	299.5

np not available for publication but included in totals where applicable, unless otherwise indicated

(a) See paragraph 5 of the Explanatory Notes.

Month	Food retailing	Department stores	Clothing and soft good retailing	Household good retailing	Recreational good retailing	Other retailing	Hospitality and services	Total
ORIGINAL (\$ million)								
<b>2001</b>								
November	65.3	np	8.1	19.1	4.5	np	27.0	146.0
December	64.9	np	10.1	21.8	5.4	np	24.4	154.3
<b>2002</b>								
January	61.3	np	6.8	17.8	4.9	np	21.5	131.2
February	56.9	np	5.8	16.2	4.7	np	19.4	120.4
March	65.8	np	6.1	17.5	5.2	np	22.9	136.7
April	65.3	np	6.4	18.2	4.9	np	22.7	139.0
May	71.5	np	7.6	18.7	5.2	np	25.1	150.6
June	70.3	np	7.6	19.3	5.2	np	25.1	151.0
July	76.4	np	8.6	16.2	5.8	np	27.7	161.7
August	77.8	np	8.5	17.8	6.2	np	27.4	164.9
September	72.2	np	7.9	17.0	5.5	np	24.8	152.1
October	73.4	np	7.8	16.6	5.1	np	26.4	153.2
November	70.0	np	8.0	16.3	4.9	np	26.0	150.7
December	72.3	np	9.3	18.2	6.0	np	25.3	162.7
<b>2003</b>								
January	66.0	np	6.1	16.4	3.8	np	21.9	135.2
SEASONALLY ADJUSTED (\$ million)								
<b>2001</b>								
November	66.6	np	7.7	18.7	4.7	np	25.5	143.9
December	64.1	np	7.5	18.8	4.8	np	24.5	140.1
<b>2002</b>								
January	66.6	np	7.8	19.0	5.4	np	24.8	145.3
February	65.9	np	7.7	18.3	5.4	np	24.7	144.1
March	67.1	np	7.4	18.6	5.3	np	24.6	144.9
April	68.2	np	7.3	18.8	5.3	np	24.3	147.6
May	69.4	np	8.1	18.2	5.2	np	24.5	148.8
June	68.8	np	7.7	18.8	5.1	np	24.4	149.5
July	71.0	np	7.7	16.5	5.6	np	24.5	150.4
August	70.3	np	7.5	17.8	5.7	np	24.0	149.2
September	71.4	np	7.7	17.2	5.4	np	24.4	150.5
October	71.1	np	7.3	16.1	5.0	np	24.6	146.8
November	71.0	np	7.6	15.7	5.0	np	24.7	148.0
December	71.6	np	7.0	15.3	5.1	np	25.1	147.7
<b>2003</b>								
January	71.6	np	7.0	17.1	4.3	np	25.1	149.0
TREND ESTIMATES (\$ million)								
<b>2001</b>								
November	65.0	np	7.7	18.5	4.8	np	24.9	141.5
December	65.6	np	7.6	18.7	5.0	np	24.8	142.6
<b>2002</b>								
January	66.1	np	7.6	18.8	5.1	np	24.7	143.7
February	66.6	np	7.6	18.8	5.2	np	24.6	144.8
March	67.2	np	7.6	18.7	5.3	np	24.6	146.0
April	68.0	np	7.6	18.5	5.3	np	24.5	147.2
May	68.8	np	7.7	18.3	5.4	np	24.4	148.5
June	69.6	np	7.7	18.1	5.4	np	24.3	149.4
July	70.2	np	7.7	17.7	5.4	np	24.3	149.7
August	70.6	np	7.7	17.2	5.4	np	24.3	149.5
September	70.9	np	7.6	16.8	5.3	np	24.4	149.1
October	71.1	np	7.4	16.4	5.2	np	24.6	148.6
November	71.3	np	7.3	16.2	5.0	np	24.7	148.2
December	71.5	np	7.2	16.0	4.8	np	24.9	148.0
<b>2003</b>								
January	71.5	np	7.1	16.0	4.6	np	25.0	147.8

np not available for publication but included in totals where applicable, unless otherwise indicated

(a) See paragraph 5 of the Explanatory Notes.

## RETAIL TURNOVER, By Industry Group(a)—Australian Capital Territory

Month	Food retailing	Department stores	Clothing and soft good retailing	Household good retailing	Recreational good retailing	Other retailing	Hospitality and services	Total
ORIGINAL (\$ million)								
<b>2001</b>								
November	117.4	29.9	18.8	46.4	13.2	28.4	50.2	304.2
December	128.2	53.1	26.8	55.1	19.3	41.6	51.3	375.4
<b>2002</b>								
January	113.1	23.5	18.6	44.1	11.8	23.7	45.7	280.4
February	106.2	20.2	17.6	37.7	13.0	22.2	45.2	262.1
March	116.3	24.4	17.8	43.6	12.5	25.6	50.6	290.9
April	110.3	26.2	20.0	43.4	12.7	23.8	49.4	285.8
May	117.2	28.2	21.9	45.0	13.3	24.2	50.2	300.0
June	111.7	27.3	20.1	45.0	12.4	21.4	50.8	288.7
July	110.8	24.4	18.3	40.6	14.1	23.8	53.7	285.6
August	116.7	24.1	18.1	43.9	14.4	25.3	55.9	298.4
September	111.6	24.0	17.1	41.3	12.7	27.4	52.6	286.6
October	118.8	27.5	18.7	49.4	12.5	25.4	54.6	306.9
November	119.7	33.8	20.2	50.8	13.7	29.4	55.2	322.7
December	129.3	52.5	26.8	61.2	18.7	37.5	57.1	383.1
<b>2003</b>								
January	114.2	24.2	16.8	51.6	13.1	18.0	50.1	288.0
SEASONALLY ADJUSTED (\$ million)								
<b>2001</b>								
November	113.8	27.3	19.1	43.5	12.6	26.6	48.7	291.5
December	113.4	27.1	18.6	42.8	13.2	27.4	48.4	290.8
<b>2002</b>								
January	114.4	27.2	20.3	43.5	13.6	27.4	49.4	295.8
February	114.2	28.0	21.8	42.5	15.0	26.4	50.6	298.5
March	114.4	27.2	19.2	45.5	12.6	27.0	49.5	295.4
April	115.5	27.3	19.0	48.0	13.5	26.3	48.1	297.8
May	115.8	28.1	20.1	46.3	13.5	25.2	49.6	298.6
June	117.1	31.2	19.7	46.8	12.7	24.3	51.3	303.2
July	112.5	24.7	18.0	40.6	13.7	24.9	52.4	286.9
August	114.5	27.9	19.9	45.6	14.8	24.9	55.6	303.1
September	117.0	28.9	19.8	44.0	13.7	26.7	53.5	303.5
October	116.6	28.4	19.3	47.7	13.3	24.8	53.2	303.3
November	115.8	29.8	19.7	47.5	12.9	27.8	53.3	306.9
December	114.8	27.7	19.0	47.3	12.8	24.2	54.5	300.4
<b>2003</b>								
January	115.0	28.4	18.2	50.7	15.1	20.8	54.6	302.8
TREND ESTIMATES (\$ million)								
<b>2001</b>								
November	113.4	27.0	19.1	43.6	13.0	26.9	48.6	291.6
December	114.0	27.1	19.4	43.4	13.2	26.9	48.9	293.1
<b>2002</b>								
January	114.4	27.3	19.6	43.7	13.5	26.9	49.2	294.8
February	114.7	27.5	19.8	44.4	13.6	26.8	49.2	296.3
March	115.0	27.6	19.8	45.2	13.6	26.5	49.3	297.2
April	115.1	27.6	19.6	45.7	13.5	25.9	49.6	297.6
May	115.2	27.7	19.5	45.6	13.5	25.4	50.4	297.5
June	115.3	27.9	19.4	45.2	13.5	25.1	51.3	297.8
July	115.3	28.1	19.4	44.8	13.6	25.2	52.4	298.6
August	115.4	28.3	19.4	44.7	13.6	25.4	53.2	300.0
September	115.6	28.5	19.4	45.2	13.6	25.6	53.7	301.4
October	115.7	28.6	19.4	46.2	13.5	25.5	53.9	302.7
November	115.7	28.6	19.2	47.4	13.5	25.1	54.0	303.5
December	115.6	28.6	19.1	48.4	13.6	24.4	54.1	303.9
<b>2003</b>								
January	115.6	28.6	18.9	49.5	13.7	23.6	54.2	304.8

(a) See paragraph 5 of the Explanatory Notes.

## EXPLANATORY NOTES

### INTRODUCTION

**1** This publication presents monthly estimates of the value of turnover of retail businesses classified by industry, and by state/territory. The principal objective of the series is to show month to month movement of turnover.

**2** Estimates of turnover contained in this publication are compiled from the Retail Business survey which includes about 6,500 retail and selected service businesses. All 'large' businesses are included in the survey, while a sample of about 4,100 'smaller' businesses is selected. The 'large' business' contribution of approximately 55% of the total estimate ensures a highly reliable Australian total turnover estimate.

### SCOPE AND COVERAGE

**3** The scope of the Retail Business survey is all employing businesses with at least one retail outlet. Like most ABS economic surveys, the frame used for the Retail Business survey is taken from the ABS Business Register which includes registrations to the Australian Taxation Office's (ATO) Pay As You Go Withholding (PAYGW) scheme. Each statistical unit (as defined below) included on the ABS Business Register is classified to the Australian and New Zealand Standard Industrial Classification (ANZSIC) industry in which it mainly operates. The frame is supplemented with information about business which are classified as non-retail but which have significant retail activity.

**4** The frame is updated quarterly to take account of new businesses, businesses which have ceased employing, changes in employment levels, changes in industry and other general business changes. The estimates include an allowance for the time it takes a newly registered business to get on to the survey frame. Businesses which have ceased employing are identified when the ATO cancels their Australian Business Number (ABN) and/or PAYGW registration. In addition, businesses with less than 50 employees which did not remit under the PAYGW scheme in each of the previous five quarters are removed from the frame.

**5** The following industries included in the survey are as defined in ANZSIC:

■ Food Retailing

Supermarkets and grocery stores (5110) and non-petrol sales of convenience stores of selected petrol stations

Takeaway food retailing (5125)

Other food retailing

Fresh meat, fish and poultry retailing (5121)

Fruit and vegetable retailing (5122)

Liquor retailing (5123)

Bread and cake retailing (5124)

Specialised food retailing n.e.c. (5129)

■ Department Stores (5210)

■ Clothing and Soft Good Retailing

Clothing retailing (5221)

Footwear, fabric and other soft good retailing

Footwear retailing (5222)

Fabric and other soft good retailing (5223)

■ Household Good Retailing

Furniture and floor covering retailing

Furniture retailing (5231)

Floor covering retailing (5232)

Domestic hardware and houseware retailing (5233)

Domestic appliance and recorded music retailing

Domestic appliance retailing (5234)

Recorded music retailing (5235)

## EXPLANATORY NOTES *continued*

### SCOPE AND COVERAGE

*continued*

- Recreational Good Retailing
  - Newspaper, book and stationery retailing (5243)
  - Other recreational goods retailing
    - Sport and camping equipment retailing (5241)
    - Toy and game retailing (5242)
    - Photographic equipment retailing (5244)
- Other Retailing
  - Pharmaceutical, cosmetic and toiletry retailing (5251)
  - Other retailing n.e.c.
    - Antique and used good retailing (5252)
    - Garden supplies retailing (5253)
    - Flower retailing (5254)
    - Watch and jewellery retailing (5255)
    - Retailing n.e.c. (5259)
- Hospitality and Services
  - Hotels and licensed clubs
    - Pubs, taverns and bars (5720)
    - Clubs (Hospitality) (5740)
  - Cafes and restaurants (5730)
  - Selected services
    - Video hire outlets (9511)
    - Hairdressing and beauty salons (9526).

### STATISTICAL UNITS DEFINED ON THE ABS BUSINESS REGISTER

**6** The ABS uses an economic statistics units model on the ABS Business Register to describe the characteristics of businesses, and the structural relationships between related businesses. The units model is also used to break groups of related businesses into relatively homogeneous components that can provide data to the ABS.

**7** In mid 2002, to better use the information available as a result of The New Tax System, the ABS changed its economic statistics units model. The new units model allocates businesses to one of two sub-populations. The vast majority of businesses are in what is called the ATO Maintained Population, while the remaining businesses are in the ABS Maintained Population. Together, these two sub-populations make up the ABS Business Register population.

#### *ATO Maintained Population*

**8** Most businesses and organisations in Australia need to obtain an ABN, and are then included on the ATO Australian Business Register. Most of these businesses have simple structures; therefore the unit registered for an ABN will satisfy ABS statistical requirements. For these businesses, the ABS has aligned its statistical units structure with the ABN unit. The businesses with simple structures constitute the ATO Maintained Population, and the ABN unit is used as the statistical unit for all economic collections.

#### *ABS Maintained Population*

**9** For the population of businesses where the ABN unit is not suitable for ABS statistical requirements, the ABS maintains its own units structure through direct contact with each business. These businesses constitute the ABS Maintained Population. This population consists typically of large, complex and diverse businesses. The new statistical units model described below has been introduced to cover such businesses.

Enterprise Group: This is a unit covering all the operations in Australia of one or more legal entities under common ownership and/or control. It covers all the operations in Australia of legal entities which are related in terms of the current Corporations Law (as amended by the Corporations Legislation Amendment Act 1991), including legal entities such as companies, trusts, and partnerships. Majority ownership is not required for control to be exercised.

## EXPLANATORY NOTES *continued*

### ABS Maintained Population *continued*

Enterprise: The enterprise is an institutional unit comprising (i) a single legal entity or business entity, or (ii) more than one legal entity or business entity within the same Enterprise Group and in the same institutional sub-sector (ie they are all classified to a single Standard Institutional Sector Classification of Australia sub-sector).

Type of Activity Unit (TAU): The TAU is comprised of one or more business entities, sub-entities or branches of a business entity within an Enterprise Group that can report production and employment data for similar economic activities. When a minimum set of data items are available, a TAU is created which covers all the operations within an industry sub-division (and the TAU is classified to the relevant sub-division of the ANZSIC). Where a business cannot supply adequate data for each industry, a TAU is formed which contains activity in more than one industry sub-division.

**10** For more information on the impacts of the introduction of the new economic statistics units model, refer to *Information Paper: Improvements in ABS Economic Statistics [Arising from the New Tax System]* (cat. no. 1372.0).

**11** Prior to the July 2002 reference month, the Retail Business survey used the management unit as the statistical unit. From the July 2002 reference month onwards, the statistical unit is the ABN unit for businesses with simple structures, and the TAU for businesses with complex structures. In most cases, ABN/TAU units concord with the management units previously used.

### SURVEY METHODOLOGY

**12** The survey is conducted monthly by both telephone interview and a questionnaire mailed to businesses. The businesses included in the survey are selected by random sample from a frame stratified by state, industry and business size. For the ABS Maintained Population, the ABS uses reported employment as the measure of business size. For the ATO Maintained Population, for which employment data are not updated on a regular basis, the ABS uses a derived size benchmark. The derived size benchmark is a modelled employment size measure, based primarily on wages and salaries from Business Activity Statements or number of payees from the ATO, which is scaled to be the same magnitude as the previous employment benchmark, using current ABS employment data from the Survey of Employment and Earnings.

**13** In the first month of each quarter, some businesses in the sample are replaced, at random, by other businesses so that the reporting load can be spread across smaller retailers.

**14** Most businesses can provide turnover on a calendar month basis and this is how the data are presented. When businesses cannot provide turnover on a calendar month basis, the reported data and the period they relate to are used to estimate turnover for the calendar month.

**15** Most retailers operate in a single state/territory. For this reason, estimates of turnover by state/territory are only collected from the larger retailers which are included in the survey each month. These retailers are asked to provide turnover for sales from each state/territory in which the business operates. Turnover for the smaller businesses is allocated to the state of their head office or main outlet.

### DEFINITION OF TURNOVER

**16** Turnover includes retail sales; wholesale sales; takings from repairs, meals and hiring of goods (except for rent, leasing and hiring of land and buildings); commissions from agency activity (e.g. commissions received from collecting dry cleaning, selling lottery tickets, etc.); and net takings from gaming machines etc. From July 2000, turnover includes the Goods and Service Tax.



## EXPLANATORY NOTES *continued*

### DEFINITION OF TURNOVER

*continued*

**17** Turnover presented in the Retail Trade series includes net proceeds from licensed gambling activities undertaken in the Hotels and licensed clubs industry. The impact of net proceeds from gambling on movements in the Retail Trade series was discussed in a feature article 'Contribution of gambling to retail estimates' included in the December 2002 issue of this publication. The article concluded that net proceeds from gambling had not had a significant impact on quarterly movements for the series but net proceeds from gambling had increased over time and users should be aware of this when interpreting the series. As published in the article, in June quarter 2002 net proceeds from gambling represented 36.8% of the Hotels and licensed clubs series and 3.5% of the Australian Retail and Hospitality/Services turnover series. These values were not affected by the revisions made to the June to July 2002 movement of 'Total Retail' in this issue, but there were minor revisions, due to total State turnover revisions, to some June quarter estimates for the 'percentage of net proceeds from gambling, by State'. However, despite these minor revisions the conclusions presented in the article still apply.

### SEASONAL ADJUSTMENT

**18** Seasonally adjusted estimates are derived by estimating and removing systematic calendar related effects from the original series. In the Retail trade series, these calendar related effects are known as seasonal (e.g. increased spending in December as a result of Christmas) and trading day influences (arising from the varying length of each month and the varying number of Sundays, Mondays, Tuesdays, etc. in each month). Each influence is estimated by separate seasonal and trading day factors which, when combined, are referred to as the combined adjustment factors.

**19** The seasonally adjusted estimates also have an allowance for an Easter proximity effect, which is caused when Easter falls late in March or early in April. This effect, when present, is combined with the seasonal and trading day factors to form the combined adjustment factors. There is also a similar allowance for the variable timing of Father's Day. See the Appendix of the July 2001 and August 2002 issues respectively of this publication for more information.

**20** The Retail series uses a concurrent seasonal adjustment methodology to derive the combined adjustment factors. This means that data from the current month are used in estimating seasonal and trading day factors for the current and previous months. For more information see *Information Paper: Introduction of Concurrent Seasonal Adjustment into the Retail Trade Series* (cat. no. 8514.0).

**21** Concurrent adjustment can result in revisions each month to estimates for earlier periods. However, in most instances, the only noticeable revisions will be to the combined adjustment factors for the current month, the previous month and the same month a year ago. The following table shows how the combined adjustment factor for these months, at the total Australian Retail and Hospitality/services level, evolved under the concurrent seasonal adjustment methodology. The table presents two different estimates of the combined adjustment factors. The first row gives the combined adjustment factors estimated following the last annual reanalysis in August 2002 using data up to and including the July 2002 reference month. The second row gives the most recent combined adjustment factors estimated and used in this month's calculation of the concurrent seasonally adjusted series.

## EXPLANATORY NOTES *continued*

### SEASONAL ADJUSTMENT

*continued*

### COMBINED ADJUSTMENT FACTORS

	<i>Jan</i> 2002	<i>Dec</i> 2002	<i>Jan</i> 2003
<b>Factors as estimated at last reanalysis</b> (July 2002 reference month)	0.99277	1.28699	1.00071
<b>Factors as estimated with current month's data</b> (January 2003 reference month)	0.99097	1.28089	1.00105

**22** The seasonal adjustment methodology is able to produce combined adjustment factors for future months. The latest factors for some future months are shown in the following table. While these factors represent the best current estimate, the actual factors used for estimating the seasonally adjusted estimates in these months will differ because they will incorporate subsequent months' data as they become available.

### COMBINED ADJUSTMENT FACTORS

	<i>Feb</i> 2003	<i>Mar</i> 2003	<i>Apr</i> 2003
<b>Factors as estimated with current month's data</b> (January 2003 reference month)	0.88411	0.96490	0.95618

**23** The seasonal and trading day factors are reviewed annually at a more detailed level than possible in the monthly processing cycle. The annual reanalysis will not normally result in significant changes. For Retail Trade, the results of the latest review are usually shown in the July issue each year, but for 2002 appear in the August issue.

**24** In the seasonal adjustment process, both the seasonal and trading day factors evolve over time to reflect changes in spending and trading patterns. Examples of this evolution include the slow move in spending from December to January; and, increased trading activity on weekends and public holidays. The seasonally adjusted estimates still reflect the sampling and non-sampling errors to which the original estimates are subject.

**25** As a result of the different treatment of Australian and State totals in the seasonal adjustment process, the Australian total for an industry group may not necessarily equal the sum of the State totals for that industry group.

### TREND ESTIMATES

**26** The monthly trend estimates are derived by applying a 13-term Henderson moving average to the seasonally adjusted estimates (7-term for quarterly series). The Henderson moving average is symmetric, but as the end of a time series is approached, asymmetric forms of the moving average have to be applied. The asymmetric moving averages have been tailored to suit the particular characteristics of individual series and enable trend estimates for recent periods to be produced. Estimates of the trend will be improved at the current end of the time series as additional observations become available. This improvement is due to the combined effect of the concurrent seasonal adjustment methodology and the application of different asymmetric moving averages for the most recent six months (or three quarters). As a result of the improvement, most revisions to the trend estimates will be observed for the most recent six months (or three quarters).

**27** Trend estimates are used to analyse the underlying behaviour of the series over time. As a result of the introduction of The New Tax System, a break in the monthly trend series has been inserted between June and July 2000. Care should therefore be taken if comparisons span this period. For more details refer to the Appendix in the December 2000 issue of this publication.

## EXPLANATORY NOTES *continued*

### TREND ESTIMATES *continued*

**28** For further information on trend estimates, see *Information Paper: A Guide to Interpreting Time Series — Monitoring 'Trends': an Overview* (cat. no. 1348.0) or contact the Assistant Director, Time Series Analysis on Canberra 02 6252 6345.

### CHAIN VOLUME MEASURES

**29** The chain volume measures of retail turnover appearing in the quarterly issue of this publication are annually reweighted chain Laspeyres indexes referenced to current price values in a chosen reference year (currently 2000–2001). The reference year is updated in the June publication each year. Each year's data in the Retail chain volume series are based on the prices of the previous year, except for the quarters of the latest incomplete year (i.e. for the 2002–2003 financial year) which are based upon price data for the 2000–2001 financial year. Comparability with previous years is achieved by linking (or chaining) the series together to form a continuous time series.

### RELIABILITY OF ESTIMATES

**30** There are two types of error possible in estimates of retail turnover:

*Sampling error* which occurs because a sample, rather than the entire population, is surveyed. One measure of the likely difference resulting from not including all establishments in the survey is given by the standard error, see below. Sampling error may be larger for the first month of each quarter, when some of the businesses in the sample are replaced by other businesses so that the reporting load can be spread across retailers.

*Non sampling error* which arises from inaccuracies in collecting, recording and processing the data. The most significant of these errors are: misreporting of data items; deficiencies in coverage; non-response; and processing errors. Every effort is made to minimise reporting error by the careful design of questionnaires, intensive training and supervision of interviewers, and efficient data processing procedures.

### STANDARD ERRORS

**31** Standard errors for the Australian estimates (original data) for January 2003 contained in this publication are:

<i>Data Series</i>	<i>Estimate</i>	<i>Standard error</i>
Level of retail turnover (\$m)	14 493.9	133.9
Change from preceding month (\$m)	-4 019.6	106.0
% change from preceding month (%)	-21.7	0.5

**32** Estimates for sampled businesses in the first month of each quarter can be influenced by the quarterly rotation of approximately 10% of sampled businesses. This rotation is done to spread the reporting load across retailers. At times, the businesses rotated in to the sample can perform differently from the businesses they replace or those already in the sample. The potential impact of the quarterly rotation is reflected in the sampling errors for the relevant months.

**33** Seasonally adjusted and trend estimates and chain volume measures are also subject to sampling variability. For seasonally adjusted estimates, the standard errors are approximately the same as for the original estimates. For trend estimates, the standard errors are likely to be smaller. For chain volume measures, the standard errors may be up to 10% higher than those for the corresponding current price estimates because of the sampling variability contained in the prices data used to deflate the current price estimates.

**34** To assist users in assessing the reliability of estimates, each data series has been given a grading of A to E. Where:

## EXPLANATORY NOTES *continued*

### STANDARD ERRORS *continued*

- A represents a relative standard error on level of less than 2%. The published estimates are highly reliable for movement analysis;
- B represents a relative standard error on level between 2 and 5%, meaning the estimate is reliable for movement analysis purposes;
- C represents a relative standard error on level between 5 and 10%, meaning users are advised to exercise some caution in interpreting movements for such series;
- D represents a relative standard error on level between 10 and 15% meaning users are advised to exercise caution in interpreting movements for such series; and
- E represents a relative standard error on level greater than 15% (mainly affects unpublished state by industry series).

**35** The table below provides an indicator of reliability for key retail turnover estimates.

	Food retailing	Depart- ment Stores	Clothing & soft good retailing	House- hold good retailing	Recrea- tional good retailing	Other retailing	Hospit- ality & services	Total
NSW	B	A	B	C	C	C	B	A
Vic.	B	A	C	C	C	C	B	A
Qld	B	A	B	C	C	D	C	B
SA	B	A	B	C	C	C	C	B
WA	B	A	B	C	D	D	C	B
Tas.	B	np	C	C	D	np	C	B
NT	B	np	C	C	E	np	C	B
ACT	B	A	B	C	C	D	C	B
Aust.	A	A	B	B	B	B	B	A

np not available for publication but included in totals where applicable, unless otherwise indicated

### ABS DATA AVAILABLE ON REQUEST

**36** Retail Survey Special Data Service provides additional retail trade statistics which include further State industry dissections through to 'top ten' industry reports. For more information, contact the Retail Trade Special Data Services manager on Canberra 02 6252 5220.

### RELATED PUBLICATIONS

**37** Current publications and other products released by the ABS are listed in the *Catalogue of Publications and Products, Australia* (cat. no. 1101.0). The Catalogue is available from any ABS office or the ABS web site <<http://www.abs.gov.au>>. The ABS also issues a daily Release Advice on the web site which details products to be released in the week ahead.

### ABBREVIATIONS

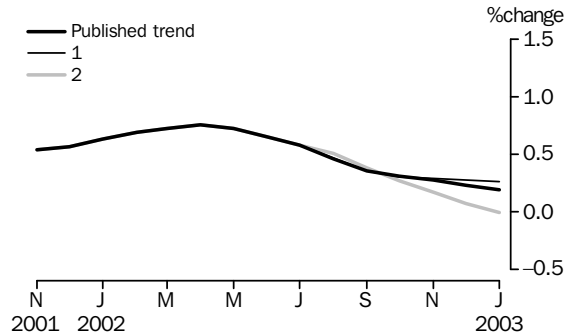
ABN	Australian Business Number
ABS	Australian Bureau of Statistics
ANZSIC	Australian and New Zealand Standard Industrial Classification
ATO	Australian Taxation Office
n.e.c.	not elsewhere classified
PAYGW	pay-as-you-go withholding
TAU	type of activity unit

# TECHNICAL NOTE REVISIONS TO TREND ESTIMATES

## EFFECT OF NEW SEASONALLY ADJUSTED ESTIMATES ON TREND ESTIMATES

**1** The most recent trend estimates published in this release are likely to be revised when next month's seasonally adjusted estimates become available. To assist readers of this publication in analysing retail trends, the approximate effect of the two possible scenarios on the previous trend estimates of the percentage change in total retail turnover for Australia are presented below. For more information see the trend estimates section of the explanatory notes.

- 1 The February seasonally adjusted estimate of retail turnover is 1.0% higher than the January estimate.
- 2 The February seasonally adjusted estimate of retail turnover is 1.0% lower than the January estimate.



## TECHNICAL NOTE

**2** Under concurrent seasonal adjustment, the most recent seasonally adjusted and trend estimates are likely to be revised when original estimates for subsequent months become available. The trend revision is a combined result of the revision of the seasonally adjusted estimates and the revision derived from the use of asymmetric moving averages as future data become available (for more information, refer to paragraph 26 in the explanatory notes). ABS research shows that about 75% of the total revision to the trend estimate at the current end of the time series is due to the use of different asymmetric moving averages when the original estimate for the next time period becomes available. To assess the reliability of the trend estimate at the current end, the "what-if" chart presents trend estimates under two different scenarios of the next time period. The chart shows only the impact due to the changes of the asymmetric moving averages and does not include the unknown impact of revision to seasonal factor estimates that would arise when the original estimate for the next time period becomes available.





## FOR MORE INFORMATION . . .

- INTERNET* **www.abs.gov.au** the ABS web site is the best place to start for access to summary data from our latest publications, information about the ABS, advice about upcoming releases, our catalogue, and Australia Now—a statistical profile.
- LIBRARY* A range of ABS publications is available from public and tertiary libraries Australia-wide. Contact your nearest library to determine whether it has the ABS statistics you require, or visit our web site for a list of libraries.
- CPI INFOLINE* For current and historical Consumer Price Index data, call 1902 981 074 (call cost 77c per minute).
- DIAL-A-STATISTIC* For the latest figures for National Accounts, Balance of Payments, Labour Force, Average Weekly Earnings, Estimated Resident Population and the Consumer Price Index call 1900 986 400 (call cost 77c per minute).

## INFORMATION SERVICE

Data that is already published and can be provided within five minutes is free of charge. Our information consultants can also help you to access the full range of ABS information—ABS user-pays services can be tailored to your needs, time frame and budget. Publications may be purchased. Specialists are on hand to help you with analytical or methodological advice.

- PHONE* 1300 135 070
- EMAIL* [client.services@abs.gov.au](mailto:client.services@abs.gov.au)
- FAX* 1300 135 211
- POST* Client Services, ABS, GPO Box 796, Sydney NSW 1041

## WHY NOT SUBSCRIBE?

ABS subscription services provide regular, convenient and prompt deliveries of ABS publications and products as they are released. Email delivery of monthly and quarterly publications is available.

- PHONE* 1300 366 323
- EMAIL* [subscriptions@abs.gov.au](mailto:subscriptions@abs.gov.au)
- FAX* 03 9615 7848
- POST* Subscription Services, ABS, GPO Box 2796Y, Melbourne Vic 3001



2850100001036

ISSN 1032 3651

RRP \$20.00